

LAKE ANNA SUMMIT  
MARCH 16  
PAGE 12

LACA'S 2023  
WAR ON ALGAE  
PAGE 6

REGION'S NEWEST  
WINERY/BREWERY  
PAGE 22

LAKE ANNA DISTRICT  
SUPERVISOR RETIRING  
PAGE 12

# lake anna

LIFE & TIMES

**SPECIAL REPORT:**  
LAAC Anticipating  
Significant Hydrilla  
In 2023

*LABP's Persons of  
The Year Recognitions*

**Lake Anna Resort CUP  
and PUD Approved**

*Lake Anna Job Fair  
Planned For May 16*

LAKEHOUSE & LAND  
REAL ESTATE  
PAGE 10

LAKE ANNA  
BUSINESS NEWS  
PAGE 17

EAT&DRINK  
NEWS  
PAGE 26

LKA GLITERATTI  
PHOTOS  
PAGE 31

Come taste our beers  
and enjoy the view.



Waterfront  
Food  
Games  
Big Screens  
Live Music

**LAKE ANNA**  
BREWING COMPANY

MEMBER



AT LAKE ANNA TAPHOUSE

(540) 634.7500  
www.lakennabrewing.com

Snap here for menu



Offering a wide variety of hot  
and iced drinks, plus savory  
and sweet food options & breakfast sandwiches.

**208 Lake Front Dr., Mineral**

Mon. - Thurs. 8am-9:30pm ||  
Fri. & Sat. 8am-10:30pm || Sun. 8am-8pm

**“No one sells more  
real estate than RE/MAX”**



**Matthew Custer, REALTOR®**

Team Leader, Partner  
SHERRY WILSON TEAM

RE/MAX Executives  
CELL 703-727-4984  
OFFICE 540-338-6300  
FAX 703-291-2242  
matt@sherrywilson.com  
SHERRYWILSONTEAM.COM  
Licensed in Virginia



**Call a Lake Anna Local Realtor**

RE/MAX Executives  
**SHERRY  
WILSON TEAM**

**RE/MAX**



SPRING 2023

# lake anna

LIFE & TIMES

## contents



### docktalk 5

Lake Anna Resort CUP and PUD Approved By Louisa Supervisors **p. 5**

Louisa County Agrees To Acquire Lake Wastewater Plant **p. 5**

Lake Anna Civic Association's 2023 War On Algae Expands **p. 6**



Lake Anna Advisory Committee Planning For Increased Hydrilla **p. 9**

### lakehouse & land 10

Real estate market around the lake slowing.



### around the lake 12

Cuckoo Supervisor Calls It Good **p. 12**

Lake Anna Summit March 16 **p. 13**

New Fire & EMS Station Update **p. 16**



### eat & drink 26

Restaurant Week Raises \$2,500

Lake Anna Taphouse Transformation

Mad Batter Cupcake Series

Elk Creek's Newest Fried Chicken

## SPECIAL LAKE ANNA 22 PERSONS OF THE YEAR



Community Summit **p. 13**



Special People of LKA **p. 18**

### lka business 17

LABP Job Fair May 16 **p. 17**

Everleigh Winery & Brewing Co. **p. 22**



### lake life 28

calendar of events

lka job fair **17**  
C.C. McCotter



LKA glitterati & lake anna reflections **30-31**



### Quote of the Month

"The question that it comes down to for me is what type of development goes on that 15 acres and do you as a community and do we as a board have any input," Adams said. "By right, you don't have any input. We don't have any input. With a PUD, we've had a lot of input."

- Supervisor Duane Adams on p. 18

# GET RID OF UNWANTED PESTS



## Ferrell's Termite & Pest Control, Inc.

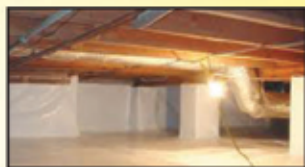
540-872-2616 • 1-888-588-5044

Licensed & Certified by the State of Virginia

- Free Termite Inspections
  - Certified Real Estate Inspections (WDIR)
  - Moisture Control • Water & Septic Inspections
  - Termite & Moisture Repair Work • Mosquito Control
- Conditioned Crawl Space - Heavy Duty Floor Supports**

## Ferrell's Mold Service

### Conditioned Crawl Space Heavy Duty Floor Supports



- Free Termite Inspections
- Certified Real Estate Inspections (WDIR)
- Moisture Control • Water & Septic Inspections
- Termite & Moisture Repair Work
- Mold Inspection • Mold Remediation

540-872-2616 • 1-888-588-5044

## Pet Care with Dr. Daniel B Slovis, DVM



### Heart Worms

Heartworm disease is caused by a blood-borne parasite known as *Dirofilaria immitis*. It is a serious and potentially fatal disease. Adult heartworms are found in the heart, pulmonary artery, and adjacent large blood vessels of infected dogs. Rarely, worms may be found in other parts of the circulatory system. Female worms are 6 - 14" long (15 - 36cm) and 1/8" wide (3 mm). Males are about half the size of females. One dog may have as many as 300 worms present when diagnosed. Adult heartworms may live up to five years. During this time, females produce millions of offspring called microfilariae. These microfilariae live mainly in the small vessels of the bloodstream.

Since transmission requires the mosquito as an intermediate host, the disease is not spread directly from dog to dog. The spread of the disease, therefore, coincides with mosquito season, which can last year-round in many parts of the United States. The number of dogs infected and the length of the mosquito season are directly correlated with the incidence of heartworm disease in any given area.

"The number of dogs infected and the length of the mosquito season are directly correlated with the incidence of heartworm disease in any given area."

There is some risk involved in treating dogs with heartworms, although fatalities are rare. In the past, the drug used to treat heartworm disease contained high levels of arsenic, and toxic side effects frequently occurred. A newer drug is available that does not have as many side effects, allowing successful treatment of more than 95% of dogs with heartworms.

Many dogs have advanced heartworm disease by the time they are diagnosed. This means that the heartworms have been present long enough to cause substantial damage to the heart, lungs, blood vessels, kidneys, and liver. Rarely, cases may be so advanced that it is safer to treat organ damage and keep the dog comfortable than it is to risk negative effects associated with killing the heartworms. Dogs in this condition are not likely to live more than a few weeks or months. Your veterinarian will advise you on the best treatment approach for your dog based on the latest recommendations from the American Heartworm Society.



**LAKE ANNA  
VETERINARY HOSPITAL**

540.894.4572

11012 Kentucky Springs Rd., Mineral, VA 23117

# lake anna

LIFE & TIMES

### Publisher

Woods & Waters Publishing, LC

### Editor-In-Chief

C.C. McCotter

### Managing Editor

Christine McCotter

### Editorial

### Staff Writers

Libby Sandridge

Amy Hager

### Advertising

### Account Representative

Amy Hager

Anne Mintz

### Advertising Design

Woods & Waters Publishing, LC

If you'd like to advertise in this paper, our annual magazine or on our illustrated map call us at 540.894.3540. Cover photo by Jen McCormick.



Instagram

#lkalife



facebook.com/lakeannalife

Website [www.lakeannalife.com](http://www.lakeannalife.com)

Email [info@lakeannalife.com](mailto:info@lakeannalife.com)

Copyright © by Woods & Waters Publishing LC 2022.

All rights reserved.

Printed on recycled newspaper.

LKA™ is a licensed trademark used with permission.

**Lake Anna Life Monthly** is published six times a year. It is distributed on newsstands around the Lake Anna region and inserted into other publications. The electronic version can be viewed at [www.lakeannalife.com](http://www.lakeannalife.com). Subscriptions are available for \$35 per year (first class mail). We invite the submission of exclusive articles and cannot be responsible to the return of unsolicited works. 114 Old Quarry Lane, Bumpass, VA 23024. News tip and advertising inquiry email: [info@lakeannalife.com](mailto:info@lakeannalife.com). Office phone: 540.894.3540. All Lake Anna Monster submissions or Letters From The Lake must be signed with return address. LKA™ is a federally registered trademark used with permission by the trademark holder. Any use must be approved and licensed by the trademark holder - Woods & Waters Publishing. For inquires call 540.894.3540.

# lake anna

LIFE & TIMES

## online



LakeAnnaLife.com is all new with more information about Lake Anna life than ever before. On our new site you'll find our LKA Dining Guide, our LKA Calendar Of Events, information on the Lake Anna Water Trail and Beverage Trail, Side Trips With Style suggestions, the LKA Activity Guide, articles on LKA Building Trends and Top Boathouses, plus a look at LKA Community Leaders and Top Real Estate Pros, plus 50 Must-Dos while you are here, Hotspots, fishing information, a look back at 50 Years of Lake Anna love and some truly incredible photos from you, our readers and followers. Pick up a hard copy at most area retailers or read it online at [www.lakeannalife.com](http://www.lakeannalife.com).

## Welcome

Lake Anna Life will feature the writing of the talented Tammy Purcell of Engage Louisa. Ms. Purcell is a professionally trained journalist that covers Louisa and Lake Anna and publishes an excellent online newsletter (called a substack). To subscribe to Engage Louisa, email her at [tammypurcell@substack.com](mailto:tammypurcell@substack.com). We welcome her to Lake Anna Life and are grateful for her interest in providing fact-based articles for our area.



## Find The Lake Anna Monster...

It's hidden somewhere in this issue. Guess right and be entered to win a \$15 LKA Outfitters gift certificate. Email your guess to us at [info@lakeannalife.com](mailto:info@lakeannalife.com).



# dock talk

See Also:

LACA's War On Algae p. 6  
Hydrilla Management p. 9  
LAAC Bridge Lighting p. 9  
Lakehouse&Land Update p. 10  
LABP Persons Of The Year p. 11  
Cuckoo Supervisor p. 12  
Lake Anna Summit p. 13

## Louisa Co. Supervisors Approve Conditional Use Permit and PUD For Lake Anna Resort

BY TAMMY PURCELL

For years Lake Anna residents have been hearing about plans to create a hotel/resort complex on commercially zoned property across from Lake Anna Plaza fronting Rt. 208 and Mitchell Creek. The latest effort achieved a major milestone when, at its January 17 meeting the Louisa County Board of Supervisors voted 6-1 to approve the controversial rezoning that clears the way for the mixed-use project.

During a nearly four-hour meeting, supervisors green-lighted LA Resort, LLC's request to rezone, from commercial to Planned Unit Development, 15.27 acres on the south side of Route 208 fronting Mitchell Creek. The developers plan to build an up to 96-unit residential condominium building, a 130-key hotel, restaurant, and boat slips on a forested property that, despite its prime location, hasn't been developed since the lake's construction in the early 1970s.

Supervisors also approved a Conditional Use Permit, allowing the residential condo building to reach 80 feet high, 20 feet taller than what's permitted for multi-family residential structures in a PUD but equal to what's allowed for hotels.

Cuckoo District Supervisor Willie Gentry was the sole board member to vote against LAR's requests.

Neighbors and other Lake Anna residents packed the meeting to oppose the rezoning. Twenty-seven people spoke during the public hearing with



Mike Garcia and Mike Grossman.

all but two either explicitly opposing the proposal or expressing concerns. Opponents reiterated issues raised at previous public meetings, arguing that the development would overwhelm local infrastructure, harm the environment, and spoil the community's rural character. They criticized the size of the proposed condo building and the noise and light pollution they fear it would bring to Mitchell Creek, wondered how the area would handle increased car and boat traffic, and said the PUD, as one critic put it, is "grossly out of character with Louisa County."

Many community members urged supervisors to keep the property's

current zoning intact, saying that they welcome hotels and restaurants, but not a high-rise residential condo building that would squeeze hundreds more people onto the lake's shore. But the groundswell of resistance didn't sway most board members.

Before voting to support the rezoning, several supervisors said that they listened to and understood neighbors' concerns, but the rezoning made sense, in part, because of what the developers could do on the commercially-zoned property by-right, meaning without board approval.

Mike Grossman, one of the project's lead developers, told the board that if LAR didn't win approval for its PUD, his team would likely revert to their back-up plan: a 150-unit condo-hotel. He said the property, which would offer condos for sale but require them to be rented at least periodically, would include an 80-foot-tall building, a boat ramp, and resort amenities.

Grossman framed the PUD as a better fit for the neighborhood, describing it as a "high-quality development," offering maintenance-free lakeside living combined with a hotel and restaurant that produce tax revenue and jobs. He noted that the residential condos could sell for \$600 to \$700 per square foot, a higher price point than the condo-hotel units, which would be cheaper and "highly-transient" because of their regular use as rentals. Grossman added that, in the PUD,

*continued on page 18*

## Louisa County Agrees To Purchase Wastewater Plant

BY TAMMY PURCELL

At its January 17 meeting the Louisa County Board of Supervisors voted unanimously to acquire an ageing wastewater treatment plant on Lake Anna with plans to modernize and upgrade it to current standards that would better enable the coming economic development of Route 208.

Louisa County agreed to pay Lake Anna Environmental Services \$90,000 for the facility, which sits on about 2.5 acres just off 208 and discharges into the lake while providing wastewater service to Lake Anna Plaza businesses and adjoining townhomes.

During the meeting supervisors noted the reason for the purchase of the plant was to: 1) to provide public wastewater infrastructure for future commercial development along the 208 corridor, an area targeted for growth in the county's 2040 Comprehensive Plan, and, 2) in the process, better protect the health of lake. Under LAES ownership, the plant has been repeatedly cited for violations by the Vir-

*continued on page 24*

**HOME POINT**  
Lake Anna's Own Home Furnishings, Decor & Fine Gifts Store

"Join me this year and let's find the perfect look for your lake home".  
**Tammy Prestipino, Owner**

Located at Anna Point Marina  
13721 Anna Point Lane,  
Mineral, VA  
540-500-9740  
@homepointlakeanna

# dock talk

## Lake Anna Civic Association's War On Algae To Expand In 2023

BY HARRY LOONY

The Lake Anna Civic Association (LACA) plans to continue their cyanobacteria/Harmful Algae Bloom (HAB) mitigation testing in 2023 with an expansion of the testing and research program conducted in 2022.

The 2022 Cyanobacteria Mitigation Project, or CMP, focused on the application, or discharge, of a hydrogen-peroxide based algaecide to reduce cyanobacteria cell densities in four test areas located in the upper portion of the lake north of the route 208 bridge.

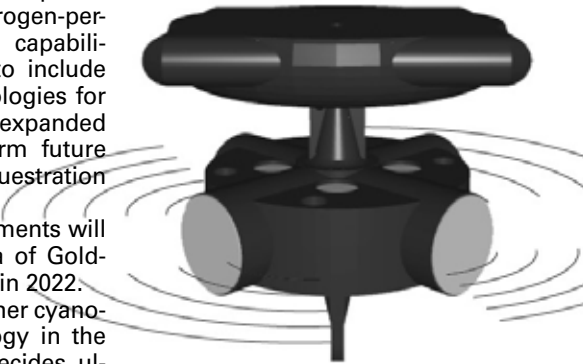
LACA plans to continue research into viable cyanobacteria mitigation and remediation strategies in 2023 with another testing and demonstration effort named the 2023 Cyanobacteria Mitigation and Remediation (2023-CMR) project (<https://www.lakeannavirginia.org/2023-CMR>).

The 2023-CMR project plan expands research beyond the hydrogen-peroxide algaecide mitigation capabilities implemented in 2022 to include testing of ultrasound technologies for cyanobacteria control and expanded sediment sampling to inform future phosphorus reduction/sequestration efforts.

In addition, algaecide treatments will be repeated in a small area of Goldmine Creek that was treated in 2022.

LACA is excited to test another cyanobacteria mitigation technology in the 2023-CMR project. Like algaecides, ultrasound provides an economical and environmentally friendly approach to cyanobacteria control.

LACA is procuring four ultrasound generators that will be mounted on docks in three test areas. Ultrasound generators produce sound waves at



**Algae-busting ultrasound buoys will be tested on Lake Anna this year**

thousands of frequencies with power levels that are lower than most fish finders. Thus, other plant and animal

species in the water are not at risk.

The ultrasound generators produce destructive effects on cyanobacteria cell structures that impact their ability to regulate buoyancy in the water column.

Cyanobacteria accumulate at the surface during the day to use sunlight to produce energy. At night, the cyanobacteria cells sink to the bottom of the lake to consume other energy sources such as phosphorous. The cyanobacteria return to the surface the following day to gather sunlight and continue energy production. It is this ability to regulate vertical position in the water column that allows cyanobacteria cells to achieve and maintain dominance over other single cell plant species in the water.

This dominance often results in the surface scums, or blooms, we see on



HEY  
NEIGHBOR!

We're sure you've seen us around.

As your local cooperative, we care about making our communities better and brighter. That's why you'll see us at hundreds of events each year, from food pantries and schools to festivals and charity events.

**You're more than a member.  
You're our neighbor.**



# dock talk

See Also:

- Hydrilla Management p. 9
- LAAC Bridge Lighting p. 9
- Lakehouse&Land Update p. 10
- LABP Persons Of The Year p. 11
- Cuckoo Supervisor p. 12
- Lake Anna Summit p. 13
- New Bridge Fire & Rescue p. 16

the water and along the shorelines of the lake. These blooms can contain very high concentrations of cyanobacteria cells and the toxins they can produce, hence the term Harmful Algae Bloom, or HAB. The ultrasound energy negates the cyanobacteria cell's buoyancy so they remain near the bottom of the lake where they eventually die from lack of sunlight.

Ultrasound research to mitigate cyanobacteria has been underway for more than 20 years and the frequencies and power levels to impact cyanobacteria species are well understood. This research has shown that low power levels at specific frequencies can cause destructive effects on internal cyanobacteria cell structures at distances up to 400 meters from the ultrasound generator.

LACA has carefully selected the locations for the generators to ensure the ultrasound effects are contained within our defined test areas. The ul-

trasound generators will be attached to docks to avoid navigation hazards. Coordination with homeowners, Homeowner Associations (HOA), and Property Owner Associations (POA) are in progress and will be completed prior to the start of the testing period in mid-May.

LACA's 2023-CMR project also includes an expansion of sediment testing that was conducted by the Lake Anna Advisory Committee (LAAC) in the upper portion of the North Anna River during a study conducted in 2021-2022. LACA is working with a nationally recognized phosphorous remediation/sequestration company to sample up to 12 stations in the upper lake.

The data generated from these sediment samples will allow LACA, industry, and state agencies to identify areas of the upper lake where phosphorous remediation may be the most economical approach to cyano-

bacteria control over the long term.

The algacide we will use in the 2023-CMR project is the same product used in 2022, Lake Guard® Oxy™ ("Oxy") manufactured by BlueGreen Water Technologies.

Oxy is a hydrogen peroxide-based algacide designed to effectively mitigate algae and cyanobacterial blooms within 24-48 hours or less in fresh and marine water bodies of any size. The formulations are based on tried-and-tested algacides that are verified safe for both humans and the environment. Oxy is approved for use by the United States Environmental Protection Agency (EPA) and by the Virginia Department of Agriculture and Consumer Services (VDACS).

The product's effectiveness against cyanobacteria is so high that only small quantities are needed to make a considerable impact on the number of cyanobacteria cells remaining in the water column after a treatment. LACA

managed the demonstration of Oxy in Lake Anna during the 2022 recreational season and the product was applied by SOLitude Lake Management, a licensed, certified applicator in Virginia.

LACA is funding the 2023 efforts through their Kick the HAB, Again campaign. The funding goal for 2023 is \$50,000, half of the 2022 goal of \$100,000 and about a third of the \$145,000 that was raised in 2022.

To donate to the Kick the HAB, Again campaign by going <https://www.lakeannavirginia.org/> or by sending a check made out to Lake Anna Civic Association with 2023 CMR on the memo line to P.O. Box 217, Mineral, VA 23117.

You can learn about the 2022 CMP at LACA's webpage (<https://www.lakeannavirginia.org/2022-CMP>) or by reading the article authored by LACA's President, Greg Baker, on page 11 of the Fall/Winter 2022 edition of the Lake Anna Life and Times (<https://lakeannalife.com/lake-anna-life-times/>). **LKA**

1-888-77-GATOR | office: (540) 834-0086 | fax: (540) 710-0460

[gatorpave@yahoo.com](mailto:gatorpave@yahoo.com)



*It is our mission to deliver the best quality paving job for the most competitive price in the industry. Our quest for quality and performing consistently beyond our customer's expectations is our primary focus.*



## Residential Paving Services

You entertain in your Home, Play in your Home and Relax in your Home. Let us help you have the best curb appeal your home can have. A new, well maintained driveway adds significant value to your home and can help you sell your home at top dollar in this competitive market place.



Call Today for your FREE Consultation. 1-888-77-GATOR





Lake Anna  
Business  
Partnership



"I handle every job like it was  
my own personal project."

- Jeff Owen



Homes  
Remodeling  
Garages - Kitchens  
Bathrooms  
Basements

**JO Contractors**

804.347.2042  
jocont@verizon.net  
www.jocontractorsva.com

## Coyote Hole Ciderworks Award Winning Cider & Sangrias

Open Daily May - Oct  
Live Music, Trivia, Bingo  
Comedy, Car Shows & More



540-894-1053  
CoyoteHole.com  
225 Oak Grove Drive  
Mineral, VA 23117



## Lake Anna Garage Doors

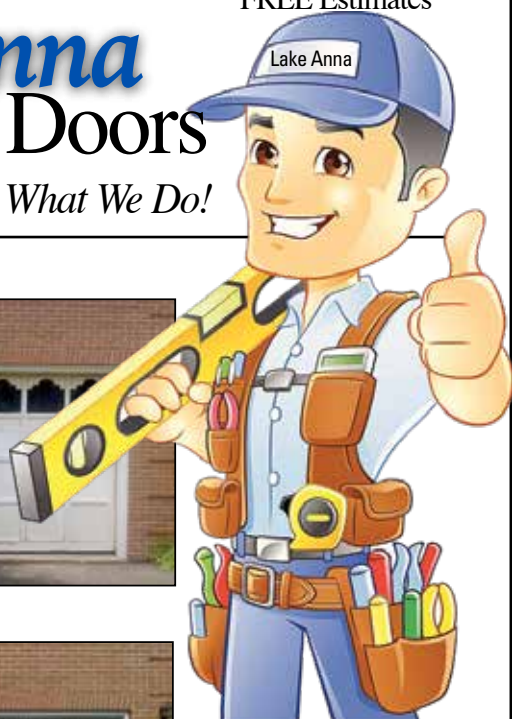
FREE Estimates

Garage Doors... It's What We Do!

Before



After



New Door Installation  
Replacement Doors  
Repairs/Maintenance  
Accessories

(540) 891-1833

You can see many more success photos at [www.lakeannadoors.com](http://www.lakeannadoors.com)

Instagram.com/SacraCustomHomes

Facebook.com/SacraCustomHomes

## Sacra Custom Homes

Built with integrity and quality craftsmanship. Committed to excellence.



Call today and make your dreams a reality!



Established  
in 1990



Specializing in Custom  
Lake Homes & Boat Houses

Custom Decks and Garages  
Expand, Restore and Renovate  
Your Existing Home  
Complete Home Improvements  
Interior/Exterior

Custom Designed Boat Houses  
with Certified State-of-the-Art  
Pile Driving Equipment

540-582-2397 | Partlow, VA | [www.sacrascape.com](http://www.sacrascape.com)

# dock talk

See Also:

Lakehouse&Land Update p. 10  
LABP Persons Of The Year p. 11  
Cuckoo Supervisor p. 12  
Lake Anna Summit p. 13  
New Bridge Fire & Rescue p. 16  
Lake Anna Job Fair p. 17  
Special People of LKK p. 20

## LAAC Anticipating Significant Hydrilla In 2023

The re-emergence and spread of the submerged aquatic weed hydrilla in Lake Anna has drawn the attention of the Lake Anna Advisory Committee, the group tasked with management of said weed.

The Lake Anna Advisory Committee's Water Quality and Environmental Subcommittee met with members of the Virginia Department of Wildlife Resources and Dominion Energy on January 8 at the Dominion Energy Visitor Center to review 2021-2022 Hydrilla Management Plan actions and discuss plans for 2023.

Attending were John Casale of the LAAC subcommittee; Devan Payne, Danny Bryant, and Sarah Marshall of Dominion Energy; and Mike Isel and John Odenkirk of VDWR.

The major focus of the annual discussions revolved around the re-emergence of hydrilla in the Freshwater Creek area, Tara Shores area, as well as multiple areas of Contrary Creek.

Isel and Odenkirk (VDWR biologists) suggested adding approximately 200 sterile grass carp to Freshwater Creek in April to control hydrilla in the Contrary Creek area. It was decided by all that this would be the best course for the Contrary Creek area as opposed to the use of herbicide at this time.

Sampling revealed the Freshwater Creek area of the lake had significant hydrilla in 2022, estimated at approximately 15 acres. It was decided to add a herbicide treatment in early

August, instead of late August/early September as in previous applications. It was also decided to treat the Tara shores hydrilla (estimated to be approximately 10 acres) in early August. It is estimated that the total costs (carp and herbicide) will approach \$17,320.

LAAC will contract with a licensed aquatic herbicide applicator to arrange for the treatment. Casale also agreed to apply for the needed sterile grass carp stocking permit from VDWR.

LAAC subcommittee members will monitor the affected areas using Downscan Sonar, beginning in early June to determine hydrilla development and a treatment protocol for the addition of grass carp and a second treatment protocol for herbicide application will be submitted to Dominion Energy at least three weeks prior to each application.

LAAC has been monitoring and managing hydrilla in the lake since the first aquatic herbicide applica-



Hydrilla growth in Freshwater Creek fall of 2022.

tion in 2019. The goal is not to eradicate hydrilla but to manage it as submerged aquatic weeds benefits include a filtering of the lake's excessive nutrients that lead to algae blooms. Hydrilla and other aquatic vegetation filters sediments and offers habitat for juvenile fish and countless macroinvertebrates that make up the basis of the food chain in the lake.

"Striking the balance with hydrilla is a difficult task. I feel confident that heeding the advice of our friends at DWR is the right course of treatment here," said LAAC Chairman C.C. McCotter. **LKA**

## Illumination Of Lake Bridges Considered By Advisory Group

After two boating accidents involving collisions with causeways around the lake this past summer, the Lake Anna Advisory Committee has begun to look into how to illuminate the lake's bridges.

At the group's November meeting, LAAC Chairman Christopher McCotter asked Infrastructure Subcommittee Chair Kimberly Wolfe to look into options.

Wolfe produced a report that detailed her subcommittee's findings.

Lights on the bridges, she noted could create a reflective situation might blind boaters and lead to accidents. She also noted the process to illuminate bridges with approved lighting would involve inspections, permits and significant costs.

Wolfe noted an alternative method to make the lake's bridges and causeways more visible would be to use reflective materials or luminescent paint.

At its February meeting LABP will discuss if it will advise Louisa and Spotsylvania Counties to take steps to illuminate the lake's bridges and causeways.

Louisa County Sheriff Donnie Lowe told Life & Times he was supportive of the idea to better illuminate Lake Anna bridges

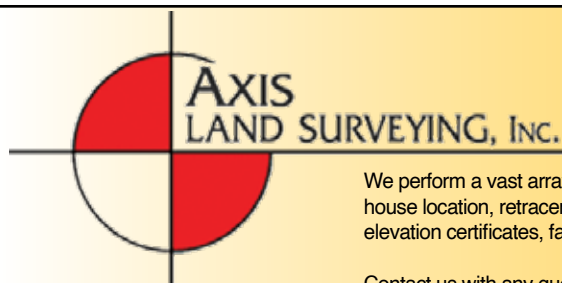


**Lake Anna's Security  
Is Our Business**

## Are you protected?

Dillard Alarm is the company to call. Whether you're looking for home or business security, Dillard Alarm has a plan of protection for you.

To learn more, visit them online at [www.dillardalarm.com](http://www.dillardalarm.com) or by scheduling a free consultation by calling (540) 898-0771.



540-895-5011

We perform a vast array of survey types: boundaries, house location, retracements, subdivision layout, flood elevation certificates, family divisions and more.

Contact us with any questions on survey matters you do not understand. No Charge for inquiries, estimates, or to get your question answered.

"I thank you for considering Axis Land Surveying for your next project." – Rex Ostrander

**Rexford L. Ostrander**  
Licensed Land Surveyor  
Since 1976

axislandsurvey@aol.com 5753 Courthouse Rd., Spotsylvania, VA 22551

# lakehouse & land

Want to advertise here? Contact us at [info@lakeannalife.com](mailto:info@lakeannalife.com)

REAL ESTATE NEWS ROUND-UP

## Lake Anna Real Estate Finding Balance With Promise

BY LIBBY SANDRIDGE

**W**hew.....what a ride it has been!

After coming off the past three years of the housing roller coaster market, home sales at Lake Anna are slowing down, along with new home construction. Low inventory has managed to keep home prices from dropping off significantly, as home buying costs remain high.

During the past several years we saw home prices increase rapidly and now we are seeing some reductions due to the slowdown. How far home prices will dip will depend on where the mortgage rates go this year. We also hit an all-time high on a sale price last year with a property reaching a sales price of \$4,750,000.00!

Here is a glimpse of what the real estate journey has been like here at Lake Anna over the past several years.

Home sales in 2019 reached

239 for the year, while 2020 escalated to 308, and 2021 capped out at 274. In 2022 we dropped back to pre-pandemic levels to 223 homes sold.

Land sales peaked in 2021 with 239 lots sold for the year. That number dropped to 145 lots sold for 2022.

Lot sales increased rapidly due to the low inventory of homes during the past three years along with the increase of multiple of

fers, causing homes to sell well above the list price. Buyers were disappointed in home prices along with availability, and chose to build, therefore getting exactly what they wanted.

Looking into the future, there has been a hodge-podge of market forecasts being reported, by many economists. However, it is predicted by many bankers that the Federal Reserve will raise rates three more times this year

due to persistent inflation.

Currently at Lake Anna, there has been nine homes sold since the first of the year and we have 41 homes active on the market with 23 under contract. Out of the 41 homes available 24 of them are waterfront and price ranges from the low \$700K to just over 2.6 million! We have 75 lots available on the market with 28 being waterfront. There have been 13 lots sold since the first and there are nine lots currently under contract.

The market seems to be more balanced than the past two years, when buyers were more likely to compete with multiple offers and sales exceeding list price. With fewer homes sold in 2022 than in 2023, the market still shows promise that a profitable sale and purchase is still possible. The key is being prepared and having reasonable expectations. High home prices and high interest rates are putting pressure on buyers' affordability.

If you are a seller you need to set a price that reflects the current market conditions at Lake Anna. If you do, you will still find that ready, willing and able buyer. Sellers should also be aware that your home will sit on the market a bit longer than the past several years. Buyers can expect to have more leverage in regard to contingencies such as home inspections, that were basically missing the past several years.

I like to remind everyone whether selling or buying to use a local Lake Anna realtor. This is especially true when you are an absent seller or buyer, you need a local agent that knows the lake and all the particulars about the rules and regulations of not just the lake but also each community. You never want to learn after the fact!

Author Libby Sandridge is a long time Lake Anna realtor with Dockside Realty. You can reach her at: 540-223-0350 - [LibbySandridge@comcast.net](mailto:LibbySandridge@comcast.net) **LKA**



Lake Anna real estate market still needs more inventory.

Begin your search for properties at  
**DiscoverLakeAnna.com**

**Linda Fosdick**

Associate Broker  
Then call or email me at  
**540.872.6556**  
[Linda@DiscoverLakeAnna.com](mailto:Linda@DiscoverLakeAnna.com)




**LINDSEY MCCLELLAN**  
REALTOR®

    
@SUNSETPROPERTIESATLKA

C: 540-220-9847 | O: 540-967-7107  
[Lindsey@SunsetPropertiesatLKA.com](mailto:Lindsey@SunsetPropertiesatLKA.com)  
[SunsetPropertiesatLKA.com](http://SunsetPropertiesatLKA.com)

 **SUNSET PROPERTIES AT LAKE ANNA**  
BROKERED BY EKP REALTY  
Licensed in Virginia & Fredericksburg, VA  
866-825-7169






Lake Anna Business Partnership

**LAKE ANNA**  
LOVE WHERE YOU LIVE

**Buying or Selling**  
Your Lake Anna Area Specialist  
CERTIFIED INVESTMENT AREA SPECIALIST

**LIBBY SANDRIDGE** ABR, CIAS

**540-223-0350**  
[libbysandridge@gmail.com](mailto:libbysandridge@gmail.com)  
Visit... [www.homesatlakeanna.com](http://www.homesatlakeanna.com)

**LONG & FOSTER REALTORS**

**Liz Sells Lake Anna!**

Licensed in the Commonwealth of Virginia  
Multi Million Dollar Sales Award Winner  
Gold Team Member

5736 Courthouse Road  
Spotsylvania, VA 22551  
**540-226-6475**

**Liz Wilson**  
Associate Broker, ABR, CSP, GRI  
[www.buyandselllakeanna.com](http://www.buyandselllakeanna.com)  
[LizWilson@LongandFoster.com](mailto:LizWilson@LongandFoster.com)




# Lake Anna's Persons Of The Year Recognitions

The Lake Anna Business Partnership conducted its annual Persons of the Year recognitions culminating with an in-person vote for Businessperson of the Year at its February 21 Business After Hours held at El Gran Patron restaurant.

"This night and accompanying recognitions were the culmination of our nomination process and some dedicated work by the committee members headed up by Ronda Guill," LABP president Jody Korman told Lake Anna Life & Times.

Member businesses are nominated for Best New Business of the Year, Young Entrepreneur of the Year, the Legacy Award, the Richard Binns Community Service Award and the Businessperson of the Year Award.

Puneet and Nadia Aluwahala, owners of Hotel Lake Anna were recognized as having the Best New Business of 2022. The duo purchased Lake Anna Lodge, renamed it Hotel Lake Anna and completely renovated many of the rooms and grounds in 2022.

Artist Jennifer Christian received the Young Entrepreneur of the Year recognition. In 2022 she worked with local businesses to create a LakeAnnaopoly board game (like Monopoly, but with local properties) that is sold in many area shops like Lake Anna Outfitters, Lake Anna Tractor & Hardware and Home Point Lake Anna.

Jody Korman was recognized as the recipient of the 2022 Richard



Photos - Above from left to right: Jody Korman/Richard Binns Community Service Award, Dr. Daniel Slovis/Business Person of the Year, Jennifer Christian/Young Entrepreneur of the Year, Jean Martin/Dedicated Service Award, Mark Smith/Legacy Award, not pictured Puneet Aluwahala/Best New Business. Right - Christopher C. McCotter and Jean Martin were recognized for their years of service to LABP.

Binns Community Service Award based on her tireless litter control advocacy with the Friends of Lake Anna Beautification Group. She organized and participated in numerous community road clean ups, inspiring many residents to join her.

Mark Smith was recognized with LABP Legacy Award. Smith served two terms as LABP president and was treasurer, overseeing the beginning of LABP recent expansion, the updating of the LABP [visitlakeanna.org](http://visitlakeanna.org) website and transitioning LABP finances to online banking.

Dr. Daniel Slovis of Lake Anna Veterinary Hospital was voted by the attending members as the LABP Businessperson of the Year. He opened his practice 10 years ago in the New Bridge Landing then bought property across from the shopping center and built his own building featuring the practice and state-of-the-art equipment. Slovis joked he would become the Susan Lucci of LABP award night if he didn't win this time after being nominated three years running.

Jean Martin of Southern Image Design & Build and Lake Anna Life

& Times Publisher Christopher C. McCotter were also recognized with dedicated service awards.

The Lake Anna Business Partnership consists of over 155 businesses and social members that meet monthly at a different Lake Anna venue for a Business After Hours networking event. LABP also holds the annual LakeFest and Lighted Boat Parade. They are planning a Lake Anna Summit March 16 and a Lake Anna Job Fair May 16 this year. For more information on how to join go to [www.visitlakeanna.org](http://www.visitlakeanna.org). **LKA**



Open M-F 12-5. Appointment recommended

**LAKE ANNA Floor Covering, LLC**

**Shaw FLOORS**

LIFETIME WARRANTY ON LABOR for products purchased through us!

We can restretch that poorly installed carpet, too!

Call us for a free in-home estimate!  
 540.967.1300 o 571.275.2123 c  
 email: [lkafloorcovering@yahoo.com](mailto:lkafloorcovering@yahoo.com)  
 Just minutes from the lake at 78-A Davis Hwy., Mineral, VA 23117

**HVAC SPECIALISTS OF VIRGINIA**

Quality Work. Affordable Prices.

**833-371-HVAC**

[www.hvacspecialistsofva.com](http://www.hvacspecialistsofva.com)  
 @hvacspecialistsofva

CALL TODAY TO TAKE ADVANTAGE OF THESE SAVINGS **833-371-HVAC**

<p><b>\$199</b></p> <p>MAINTENANCE PLAN WITH 2 VISITS PER YEAR</p> <p>Price per system.</p>	<p><b>\$250 OFF</b></p> <p>NEW SYSTEM INSTALLATION FREE ESTIMATE</p> <p>Cannot be combined with other offers. Limited time offer.</p>	<p><b>\$79</b></p> <p>HEATING SYSTEM TUNE-UP</p> <p>Does not include cleaning. Coupon required. Limited time offer.</p>
---	---	---

BEST OF VIRGINIA 2022 WINNER

WHAT'S NEW?

# around the lake

## Long Time Lake District Supervisor Announces Won't Run Again

After two decades years serving as Cuckoo District Supervisor, Willie Gentry has announced he will not run again in November.

The resident of Louisa at Cuckoo for 43 years told Lake Anna Life he was looking forward working on a lot of neglected personal and home projects. and spending time with grandkids.

"I can give more time to my hobbies such as my 14,000-whistle collection. I really want to get to a major travel agenda, and I will probably get back into public service on some smaller scale," the 74-year-old told Lake Anna Life & Times.

Gentry's family history with Louisa goes back to the early 1700s and he is in his 20<sup>th</sup> year representing the Cuckoo District. He is a civil engineering graduate from VPI & SU achieving a Professional Engineer (PE) license.

Gentry retired from the Virginia

Department of Transportation (VDOT) after 35 years being a Resident Engineer. He came to Louisa in 1980 to handle the operations in Fluvanna and Louisa County (over 21 years of service).

"Basically, I have served the public for over 55 years," Gentry said.

Why did he decide to run for County Supervisor?

"As a VDOT resident engineer I worked with several County Board of Supervisors and became very familiar with their job. I always thought that it would be a good move after VDOT where I would still be serving the public. I also had a lot of contacts with the citizens of Louisa County and thought I had a good enough reputation to be a good supervisor."

The long time County servant likened being a Supervisor to being a "slightly paid volunteer".

"And as you know being a volunteer can be very rewarding. I love helping

people when I can. Also serving during a growth spurt of Louisa, I was able to hopefully make a positive difference. I was put in a position to have accomplishments to be very proud of and serving the people of Louisa County has been very enjoyable."

As far as the trickier parts of being a Supervisor, Gentry notes he's noticed a change in the way some people behave.

"Over the last few years just dealing with the general public has become more difficult. Too many people have become very selfish (all about them), disrespectful and lack compromise. I also had issues getting four votes of support in representing Lake Anna mainly because of the make-up of the Board. I have served as a full-time Supervisor which didn't always let me work on personal projects or even the "honey do" list like I wanted to. There have also been some challenges as new Board members came on."

Life & Times asked Gentry what he sees as the biggest change in Louisa County for the future.

"Probably what has changed is Louisa County moving forward as



Cuckoo Supervisor Willie Gentry

*continued on page 19*

# Better together.



The more you protect the more you save.

I can help you protect more than you'd expect. I also have lots of ways to help you save when you bundle your policies.

Get the savings you deserve. Call me or stop by my office for a free quote.



**Debbie Cutright**  
540-894-5121  
296 Davis Highway  
Mineral, VA 23117



**Allstate**  
You're in good hands.

Personalized service.  
Trusted advice.

Prices vary based on how you buy. Not applicable in CA. Subject to terms, conditions and availability. Savings vary by state and product line. Allstate Vehicle and Property Insurance Co., Allstate Property and Casualty Insurance Co., Allstate Indemnity Co. © 2015 Allstate Insurance Co.

WHAT'S NEW?

# around the lake

## Lake Anna Business Partnership Will Hold Lake Anna Summit March 16

Back in 2019 the Lake Anna Business Partnership (LABP) held an innovative event dubbed the Lake Anna Community Summit. Over 20 area information sources were invited to participate and give five-minute presentations. This event was held using the Zoom video conferencing software and enabled hundreds of lake and lake area residents to listen in and ask questions.

Speakers varied from developers to VDOT representatives, County planners to fisheries managers, civic group leaders to Lake Anna Advisory Committee leaders. The meeting was informative and well-attended.

The LABP is planning on holding another Community Summit on March 16 from 2-4 pm.

"Our goal is simple; to provide a virtual meeting place for Lake Anna residents/property owners to receive information from local and regional government representatives, civic



groups and corporate neighbors relevant to the Lake Anna community in the spirit of educating, informing and creating better lines of communication," LABP President Jody Korman told Lake Anna Life & Times.

Korman told Life & Times the summit will employ 20, approximately

five-minute presentations by selected representatives focusing on topics like Lake Anna Infrastructure to include Louisa County's plans for the New Bridge Wastewater Treatment Plant, the traffic circle planned for Ware's Crossroads, Lake Anna EMS at 208, road improvements for Louisa and Spotsylvania, Lake Anna Development projects, a report from Dominion Energy, the Lake Anna Advisory Committee's hydrilla management plans, Lake Anna Civic Association's concerns/projects, Louisa County tourism, Spotsylvania tourism and Lake Anna law enforcement.

The event is open to the public. Anyone with a Zoom account will be able to tune in, even ask questions via the Zoom Chat feature.

To find out more how to participate in the 2023 Lake Anna Community Summit, go to [www.facebook.com/LakeAnnaBusinessPartnership](http://www.facebook.com/LakeAnnaBusinessPartnership) for log-in information. **LKA**

### Don't overpay for slow, unreliable internet and TV!

**MACC Satellite** is family-owned and operated, serving the Lake Anna area for over 20 years. We primarily offer satellite TV and Internet services through Dish, HughesNet and ViaSat. Our most popular product is our Unlimited Fixed Wireless Internet. Other products and services include pre-wire for new construction, antenna installation and servicing, cell phone range extenders, and television installations.



*Call or email us today with your situation and we'll offer you a solution!*



AUTHORIZED RETAILER

[maccsatellite@gmail.com](mailto:maccsatellite@gmail.com)

540.661.4255 [www.maccsatellite.com](http://www.maccsatellite.com)



**WOLF DECKING & RAILING**  
Take in the outdoors with decking and railing that takes durability and style to a whole new level.



138 West Street  
Louisa, VA 23093  
(540) 967-0026 | [jpurcell.com](http://jpurcell.com)



[wolfhomeproducts.com](http://wolfhomeproducts.com)



# Life Is Better At The Lake With Evergreene HOMES

**Take a trip to see our model on the weekends!  
Visit our website and click on open houses for current hours.**

## Choose From Our Current Waterfront Communities

- Rock Island
- Elk Creek Landing

## Or Build On Your Lot Or Ours

### Evergreene Offers:

- Price Protection Program
- Award-Winning Floorplans With Main Level Living
- Energy-Efficient Construction With 2x6 Framing

Celebrating Our 15th Year With 1,500 Homes Delivered



**Please Call For A Free Consultation!**

**540.266.3208**

**Sales@EvergreeneHomes.com**

**MyEvergreeneHome.com**

Pricing, financing and offers are subject to change without notice. Certain restrictions may apply. Photos shown may be for representative purposes only. Above information is believed to be accurate but should not be relied on without verification. See Sales Representative for complete details. Broker's Warranty Attached. © 2019 The Evergreene Companies, L.L.C. expressly reserves its copyright, commonlaw property rights and all other intellectual property rights in these plans. These plans shall not be modified, changed or reproduced in any form or matter, nor shall they be assigned to any third party without the express written permission and consent of the Evergreene Companies, L.L.C.



WHAT'S NEW?

# around the lake

## New Bridge Fire & Rescue Station Planning Ribbon-Cutting For April

Louisa County has announced the ribbon cutting date for Station 8, New Bridge Fire and Rescue. The Lake Anna community will celebrate the opening of the first County-funded fire and rescue station on June 1st.

New Bridge Station 8 reflects a \$5M investment in public safety by Louisa County. This amount includes costs for building construction, apparatus, equipment and six full time career staff.

Thanks to the generous support of the Lake Anna community, the Foundation for Lake Anna Emergency Services announced once again a fundraising goal has been surpassed. To recap a bit of history, the foundation raised \$100K as "seed funding" to demonstrate the community's commitment to help fund a new fire and rescue facility. They then set a goal to raise \$150K as the community's share in purchasing a new ambulance. This goal was reached in December 2022. As donations continued, the foundation set a new goal to help equip the



New Bridge Station 8 in February.

new ambulance with \$150K worth of equipment.

The foundation's Buy-a-Brick program was launched in late October and has resulted in nearly \$50K in donations to date! If you would like to help with the ambulance equipment

purchase and have not ordered your brick, please do so now to ensure it is included in the first installation of bricks for the grand opening. This can be done at [www.MyBrickLKA.com](http://www.MyBrickLKA.com).

In addition to brick sales, the Foundation offered sponsorships for the

patio centerpiece, the Station 8 sign, apparatus bays, benches and flag poles. The community sponsorships to date total \$70K towards supplies for the new ambulance.

Sponsorships are still available: one of three apparatus bays for \$15K, three flag poles at \$7,500 each and several benches at \$2,500 each. The donors who sponsor these will have a plaque displayed on their sponsored item and will also be listed on the Wall of Honor in the entry foyer of the station.

The Foundation will soon be presenting a check for \$78K to Louisa County Fire and Emergency Services on behalf of the generous donors from the Lake Anna community. These funds are specifically for a LifePack Monitor/Defibrillator System (\$40K) and Extrication equipment (\$38K) for the new ambulance. The county applied for a Rescue Squad Assistance Fund (RSF) grant and received an award for the purchase of the cot, power load system and stair chair for the

**WITH YOU EVERY STEP OF THE WAY!**

*Loving Lake Life!*

Mary

Crowe

**SAMSON** 703.368.1285  
PROPERTIES

SERVICING LAKE ANNA & NORTHERN VIRGINIA!

**4 1/2% FULL & ALL-INCLUSIVE LISTING SERVICE**

[www.facebook.com/MaryCroweRealtor](http://www.facebook.com/MaryCroweRealtor)

1440 Central Park Blvd, #210  
Fredericksburg, VA 22401  
540-681-1500



# WHAT'S NEW? around the lake

ambulance.

The Foundation for Lake Anna Emergency Services has been asked why they continue raising funds for a county facility. They remind everyone the New Bridge Station is the first fire and rescue station funded by County funds. The other 7 Louisa County stations were constructed through the generosity of their local communities. Therefore, the foundation is working with the Lake Anna community to follow the example by contributing to the apparatus and equipment costs.

Future equipment needs include:  
Tanker (near term replacement) - \$400,000  
Engine (replacement) - \$700,000  
Brush Truck - \$80,000

To donate via credit card or PayPal visit [www.newbridgerescue.com](http://www.newbridgerescue.com) or mail a check to: Foundation for Lake Anna Emergency Services, PO Box 1021, Louisa, VA 23093. **LKA**

## Lake Anna Job Fair Planned For May 16, Callie Opie's

The Lake Anna Business Partnership (LABP) is holding a Lake Anna Job Fair May 16 at Callie Opie's Event Barn in hopes of addressing the continuing staffing shortages area businesses have experienced the past two seasons.

"The number one thing that inhibits our members' businesses is not having enough staff to cover a shift or not having the right personnel for the job," LABP President Jody Korman told Lake Anna Life & Times. "We are going to try and provide member businesses with more staff."

LABP Past President Christopher C. McCotter brought the idea to the LABP Board of Directors and they agreed to move forward with the event. McCotter next contacted Mike Kavros, owner of Callie Opie's Orchard Restaurant, and asked if he would host the event. "Mike has done so much for the com-



munity since he's operated the restaurant and he knows the staffing issues. Plus, his event barn is a great place to have 10-20 businesses set up a table and meet prospective employees," McCotter told Life & Times.

The job fair will be held 10a-4p, Tuesday, May 16 and feature everything from restaurants to contractors, realtors to retailers looking to connect

with potential employees.

The May date permits college students looking for seasonal employment to attend. Louisa County Public Schools Director of CTE & Workforce Development, Bo Bundrick told McCotter he would support the event by encouraging Louisa County High School students to consider attending and noted if enough showed interest, he'd support them getting out of school a bit early that day and providing a bus for transportation.

"We never want to see our member businesses have to close again because they cannot staff a shift," McCotter said.

The LABP consists of over 150 members and meets the third Tuesday of the month. For more information on how to participate in the Job Fair email [info@visitlakeanna.org](mailto:info@visitlakeanna.org). **LKA**



Join Us This Season For Dinner And Sunday Brunch at

## Callie Opie's Orchard - Restaurant and Catering



Onsite catering, wedding & banquet facilities available.



**AMERICAN REGIONAL CUISINE FEATURING** steaks, grilled scallops, grilled fish, roast rack of lamb, chicken pasta and other seasonal fresh food

We offer several gluten-free, vegan, and vegetable choices.

Minutes from the lake on Rt. 522, 4533 Zachary Taylor Hwy., Mineral, VA.  
540 894-4343 • [www.callieopiesorchard.com](http://www.callieopiesorchard.com)



## No Project Is Too Small!

- Home Improvement & Repair Professional
- Honey Do List Expert
- Class A Contractor & Insured

**Nunley Contractors LLC**

Call Bill Nunley 240-271-3192 or email billnunley1010@gmail.com

## Come Enjoy 34 Taps of Regional & National Craft Brews With Us!



Full food menu, too!



Boat In or Drive Up!

Located at 208 Lake Front Dr  
Mineral in Lake Anna Plaza, on the Louisa side of the 208 bridge



(540) 634-7500

## Lake Anna Resort continued from page 5

the hotel would be farther from the lake and the development would generate less light and noise.

Mineral District Supervisor Duane Adams, who represents the area, said that he didn't like the condo-hotel concept and would prefer the PUD, which requires board approval and opens the door for community input.

"The question that it comes down to for me is what type of development goes on that 15 acres and do you as a community and do we as a board have any input," Adams said. "By right, you don't have any input. We don't have any input. With a PUD, we've had a lot of input."

Adams pointed to several decisions the developers made, prior to and during the public rezoning process, in response to community concerns. Those include barring condo owners from renting their units for less than a seven-day period, excluding a boat ramp from the property and instead only including boathouses with mechanical lifts, and, in a last-minute revision, adding specific language to its proffers to limit light pollution.

Specifically, the development's proffers require that the residential condo building's balconies have a depth of at least six feet and include only flush-mounted ceiling light fixtures. The proffers also bar the use of backlit signs facing the lake. Grossman said that these measures, combined with the use of dark-sky compliant lighting and other requirements, would significantly cut down on light reflecting off the lake.

While some board members focused on the condo-hotel versus PUD framework, Jackson District Supervisor Toni Williams homed in on another issue that sparked significant debate over the last several months: what guarantees does the county have that the lucrative commercial development that LAR promises will materialize?

When the Planning Commission considered the rezoning at its October meeting, several commissioners worried that LAR might only complete the residential building, leaving the county without the tax revenue projected from the commercial component. An economic impact study estimated that the county would net,

over and above its expenses, about \$205,000 per year from the development with some of that coming from lodging and meals taxes.

The study factored in the county's potential purchase and upgrade of a privately-owned wastewater treatment plant to serve the complex and future commercial development along Route 208. LAR agreed to chip in \$1 million toward the upgrade, a proffered condition of its rezoning request. Commissioners and community members said that the county's purchase and upgrade of the plant would make it more dependent on the anticipated revenue. Supervisors agreed to buy the plant for \$90,000 in a separate action Tuesday night and the county could spend between \$7.5 and \$11 million to improve and expand it, according to Economic Development Director Andy Wade. (See sidebar).

To allay concerns about the PUD's commercial activity failing to come to fruition, LAR tacked on a new proffer, agreeing to post a \$2 million performance bond that the county could call if an occupancy permit for the hotel isn't issued within five years of the condo building's completion. In late November, LAR also agreed to a proffer acknowledging that the county would withhold occupancy permits for the condo building until it approves site plans for the hotel and restaurant.

Grossman said that LAR intends to build the project in one phase but acknowledged that it could take longer for a hotelier to locate there. He said the proffers and development plan should give the county confidence to green-light the PUD.

"We believe, collectively, these incentives and actions should provide the county confidence that the commercial components of our proposal will be built in a timely manner and, if not, the confidence the county will be reimbursed for the portion of the wastewater treatment costs, which support the commercial parts of the PUD," he said.

Williams agreed. "They're willing to take a \$2 million punishment if they don't get a hotel vendor in a reasonable time period," he said. **LKA**

Mon: 11a - 8:30p, Tues: Closed, Wed - Thurs: 11a - 8:30p,  
Fri - Sat 11a - 9:30p, Sun: 12p - 9p

## REAL ITALIAN DELIGHT **VITO'S** ITALIAN RESTAURANT & GRILL

On Rt. 208 @ 200 Lakefront Dr., Mineral

Breakfast 8-11am Friday - Sunday  
Burgers - Sandwiches - Pizza  
Pasta - Calzone - Stromboli

Conveniently located off the  
Rt. 208 Bridge and one mile from Rt. 522  
in the mid lake region...  
just a short boat ride away!

**540.894.4440**

menu and online ordering:  
[vitosonthelake.com](http://vitosonthelake.com)



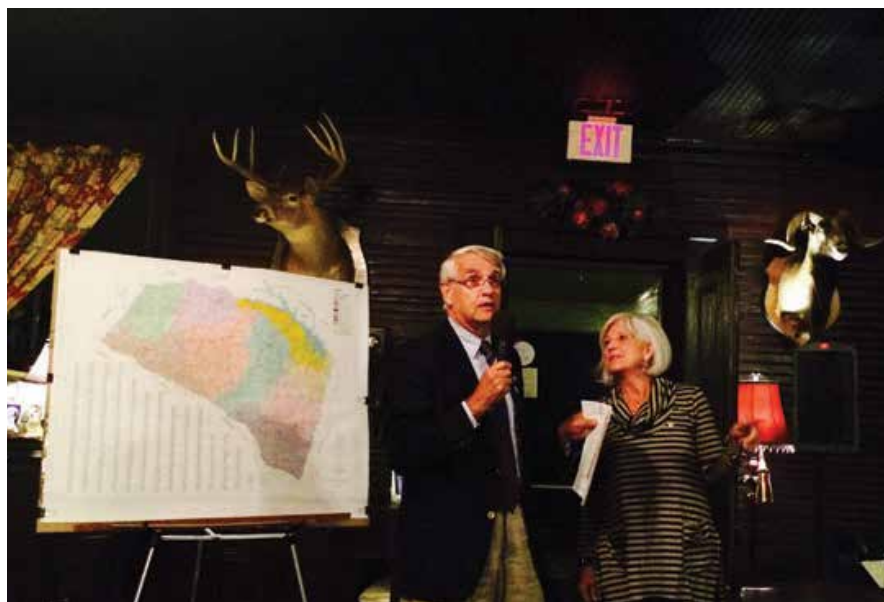
Rain or Shine. We have a huge covered patio  
to accommodate parties of any size!

## The Lounge at VITO'S



Boat In  
Or Drive In!

Now selling  
premium cigars!



**Willie Gentry and Stephanie Koren at an LBP Business After Hours.**

a growth area. That has resulted in more zoning issues and land use issues while at the same time trying to conform to the Comprehensive Plan and the rural salvation of the County. I have been very blessed because of the great people in the County and an extremely efficient and knowledgeable staff. Trying to manage/control growth has changed substantially over the years. Also because of an aging population and our 8%+ poor population has created more service needs for our residents thus leading to more budget challenges. Also, as you well know the growth at the Lake is continuously on the move."

His advice to the next Supervisor is simple – consider the impact of everything that happens on the rural character of Louisa County.

"As the large tracts are left to the heirs, some will only look for the developers' money. The only control is the Board. Some tough decisions are coming. Being a Cuckoo Supervisor, you'll have to deal with all types; from the lake to the farm, making some decisions a real challenge. Affordable housing, the aging population, providing the service needs of the poor population, economic development, tourism improvements and Short Term Rentals (STR's) will continue to be some of the issues. Thank goodness we can take broadband and the water issues off this list."

Gentry's legacy will be that of a dedicated, humble and tireless representative.

"The legacy issue is not easy to address in an unselfish way. I want to be recognized for my dedication and service to the citizens of Louisa County and that I gave the job 100%. After all I wanted to be a good Supervisor with the overall public service to my fellow man. I have treated people with respect and fairly and I hope that is

remembered, but I also realize after about six months the public will say 'Willie Gentry WHO?'"

I also would like to be remembered for sticking to my campaign promises. They were to hold the line on taxes, preserve the rural nature of the County, fiscal accountability in Louisa County, better schools, planned and managed growth, open and honest communications and available for complete service.

"Some important issues that I emphasized and was part of are advocacy of the existing pool and a future enclosed pool. As Chair of the Board I created an atmosphere of total cooperation of the School Board and the BOS (this still exists today and is not the situation in most counties), effective in saving millions of dollars in school construction, keeping the regional trash out of the County, and was the Chair of the Board when the earthquake hit.

Over the years Gentry has also served on many committees, commissions and Board of Directors, including: an advocate of JABA (Board of Directors 18 years), Jaunt (BOD 17 years), Resource Council (20 years), Volunteers of Louisa (15 years), P&R advisory commission (20 years), COA, County safety commission, Historical Society, Art Center, CERT and many, many more.

Gentry was also the president of the High School PTSA for four years and a Boy Scout counselor for eight years. He is an active member of CERT, VACO and NACO.

"I have served more than most and have loved it all because of all the great people I had the privilege to know and work with."

Lake Anna Life Publisher Christopher C. McCotter has indicated he will run for Gentry's seat. **LKA**





**LAKE DREAM REALTY**

DREAMS DO COME TRUE

# 540.227.0733

With years of experience at Lake Anna, our promise to you is reliable expertise every step of the way. Your lake dream is just a call away!

*Visit our new office located at the intersection of Rt. 522 and 612.*

16800 Monrovia Road, Orange, Virginia 22960






**Auto Insurance**

**Home Insurance**

**Business Insurance**

**Life Insurance**

**Health Insurance**

Monday – Friday: 8 am to 6 pm  
Saturday: 9 am to pm



**CENTRAL PARK INSURANCE**

Megan Anderson  
Outside Sales

MeganA@centralparkinsurance.com

**(540) 891-1160**

2609 Lafayette Blvd., Fredericksburg, VA 22408





## SPECIAL PEOPLE OF LKA

# Jon & Stephanie Koren

A series documenting those that are making a difference at Lake Anna

by Amy Hager

**W**hat makes Lake Anna so special to so many people, both resident and visitor alike? Is it the clear, clean and warm water? Is it the abundant fish and birds that also make the lake their home? Is it the lake lifestyle that features both laid back and wild boat parties and places with names like Cocktail Cove, The Sand Bar, Kayakers' Beach, Skinny Dipper's Cove and Bohemian Bay? Or is it places like Tim's, Anna Cabana, Anna Point Marina and High Point Marina that offer great access and good times?

It's probably all of the above as well as 100 other reasons depending on who you ask. But if you asked folks to name what makes Anna so special it's more often than not something that's

natural – a sunset, woods, a beach, a quiet morning or a person they admire.

In this series we'll bring you the story of families/folks that have made sure that those that live and visit here will be able to enjoy this intrinsic beauty of the lake. These are the special people of Lake Anna and we should all be grateful for them.

This issue's focus is on Jon and Stephanie Koren, owners of Lake Anna Tractor and Hardware.

As the owners of such a visible Lake Anna business, Jon and Stephanie Koren have quickly become a staple of the Lake Anna community.

Named the 2019 Louisa County Chamber of Commerce Business Persons of the Year, they have embraced the community since purchasing the business in 2018.

What inspired Jon and Stephanie to purchase Lake Anna Tractor and Hardware, a 22-acre property located at the corner of Chopping Road and Hwy 522?

"After moving to Louisa County and becoming involved with many organizations and people in the County, we decided we wanted to invest in a local business so that we could continue to enjoy all that Louisa County has to offer. Also, one of Jon's dreams was to own a hardware store," says Stephanie.

Prior to moving to Lake Anna the Korens lived in Olney, Maryland, where Jon was involved with technology companies, running sales organizations throughout the US and Canada. Stephanie continued to be active in legal, sales, and real estate industries, and raising their children. Additionally, they owned a training business to train public transportation entities.



The Korens with friends at a LABP event held at Lake Anna Winery.

Jon and Stephanie both love being on the water, boating and swimming; and knew that a lake would be an ideal place to settle down.

After considering several lakes from Virginia to North Carolina they selected Lake Anna for its rural setting and its proximity to their five children and their families.

When not working or volunteering Jon and Stephanie can be found boating, swimming, attending concerts, and spending time with friends. Their favorite pastime however, is spending time with their five children, spouses, and nine grandchildren.

If they could offer advice to those considering purchasing a business or starting one of their own at the lake,

they want them to know that while Lake Anna is a wonderful place to own a business, like anywhere else, starting and owning a business can be quite difficult.

"If you are not ready to devote all of your energy to building a business, don't do it. On the other hand, if you like the challenge, the rewards can be phenomenal."

The Korens also note that Louisa is a rural county and very different from the metropolitan areas, so an understanding of the culture and lifestyle is critical to the success of a business here at Lake Anna.

Overall, Jon and Stephanie believe that the community as a whole has played a part in the success of Lake Anna Tractor

*"If you are going to part of a community and you can't give back to it... are you really a part of the community?"*



Jon and Stephanie Koren.





Jon Koren in his office at Lake Anna Tractor & Hardware.

and Hardware.

Part of the beauty of an area like Louisa, is there are people concerned about their neighbors and community overall.

"We are a part of that, it is what we do," said Stephanie. Jon added, "If you are going to be a part of a community and you can't give back to it... are you really a part of the community?"

Being deeply dedicated to the community goes back to Stephanie's upbringing and her father's involvement in Rotary, as County Commissioner, and Mayor. She has always tried to live by the Rotary motto: Service above self. "It is just who I am," Stephanie added.

The Korens believe that at the end of the day, you can be an active participant in your community or not, and "we choose to be an active participant."

They have been involved with many organizations since relocating here in 2005. Stephanie currently serves on the Board of Directors for the Louisa Arts Center, the Fluvanna/Louisa Housing Foundation, Louisa County Rescue Squad, and the Foundation for the Virginia School for the Deaf and Blind.

Stephanie has also served on the Louisa County Board of Supervisors for the Mineral District. Jon is busy with the store and development of the property. They both believe in supporting the youth in our community and are heavily involved in supporting Louisa County Schools, particularly Athletics, the homecoming parade, and Career and Technical Education (CTE).

The duo is also involved with the Louisa County Chamber, the Forward Foundation "Leadership Louisa," and the Lake Anna Business Partnership, focusing specifically on the business community around the lake.

While giving their time and leadership to the community, they want to help others develop those skills as well. They are sponsors of Leadership Louisa, which is a program hosted by the Louisa Forward Foundation, to help people in the community develop their business leadership skills.

One of the Lake Anna Tractor and Hardware employees will be taking part in the next cohort starting in January 2023. It is very important that their employees have the opportunity to grow and thrive.

Since purchasing the store, the Korens have kept on the majority of the existing employees (even through the pandemic) and added many new employees and several apprentices. They even have a furry four legged team member, Buzz, as well to meet customers as they come into the store. Lake Anna Tractor and Hardware will be welcoming more to the team in the coming months and year.

Besides growing an amazing team, the Korens are excited that their product lines have grown and will continue to. Just in 2022 alone, the retail building is going from 3,000 square feet to a total of 9,000 square feet to increase inventory and offerings. They have remodeled the interior of the store with a new ceiling, floors, and more.

Just a taste of what will be new this year: larger and improved paint section for residential and commercial, small appliances, an expanded lighting and fan

selection, and cabinetry for bathrooms and kitchens.

"We would really like to thank all of our employees. We are blessed with a great group of people working with us. We would also like to thank all of our children for their support and understanding. And, we would be negligent if we didn't give a big thank you to our local community for supporting our business."

What is in store for the Korens and their business? They tell us they will be developing the 22 acres, adding several new buildings and more businesses. **LKA**

**GREEN GRASS,  
NOT ALGAE**  
INTRODUCING...

**LKA GREEN.COM**  
LAKE-FRIENDLY

**LAKE FRIENDLY,  
STUNNING LAWNS**

Phosphorus is a regular ingredient in most lawn care programs. It is also a leading contributor of harmful algae bloom (HAB). We offer a professional lawn treatment service by licensed professionals - without the use of phosphorus-containing products. Like to do it yourself? Order our products online and receive free delivery accompanied by our expert advice.

Take The **LAKE ANNA GREEN** PLEDGE

**FREE DIY DELIVERY TO LAKE ANNA**

CALL US **540-894-3935**

**11 STEP LAWN PROGRAM SERVICE or DELIVERED DIY PRODUCTS**

# focus on lake business

## Everleigh Winery And Brewing Company Ready To Welcome LKAers

When he wasn't seeing patients in his oncology practice, Joe Evers was enthusiastically gathering information about wine. He and his wife, Barbara, were avid wine-centric tourists and she was heavily involved in two wine clubs that featured blind tasting and food pairings.

Now, Evers continues seeing patients but he and his wife have worked tirelessly over the past four years to create their own vineyard and winery. Everleigh Vineyards and Brewing Company inhabits 130 acres of field and forest off Rt. 33 about 12 minutes from much of the lake. The business includes nearly five acres of grapevines and an almost 4,000 sq. ft. tasting and special event facility that features soaring windows that look out on the vineyard and stunning sunsets.

Their son, Ryan, 30, is in charge of the beer brewing and cider making and there are 12 taps that offer a variety of beverages.

Life & Times asked Barbara why she and her husband chose their family winemaking as their family business.



Everleigh Vineyards and Brewing Co. tasting facility.

"I always wondered why Virginia wines were not featured more prominently. I decided that we could make outstanding wines if we put the research and time into the growing of the grapes, and then put the grapes in the hands of respected accomplished wine makers. We have hired consultants to assist with the grape production since

before we planted the first vine. My family and I have spent countless hours in the vineyard doing everything possible to maximize the quality of the fruit. Our consultants over the years have backgrounds from France, California and Virginia, which has given me the best education possible. Many wine experts believe that the vineyard is where the wine is truly made, so do I!"

Based on a number of agrarian factors, the Evers chose Louisa as the site for the new venture.

"Louisa offers the climate, altitude and soils that are all conducive to growing quality grapes. It is also ideally located between Richmond/Charlottesville/Fredericksburg," Evers told Life & Times.

Wines produced at Everleigh include Cab Franc (100% varietal), Meritage (75% Cab Franc 24% petit Verdot 1% merlot), Chardonel (100% still white), a rose Chardonel/Cab Franc blend and a Champagne style (100% chardonel).

Ryan brews the family beer on premises as well. Everything from lagers to brown ales can be found in the taps. The ciders are also crafted on site and

## Your Hardware Store at the Lake!

**Hardware, Parts, Sheds, Plants, Mulch,  
Tractor & Equipment Sales & Service  
Leaf Blowers & Chain Saws  
Auto, Trailer & RV Supplies  
Emergency Generators  
Valspar Paint - Cabot Stains  
Screws - Nails - Bolts - Washers**



540/894.8770

Open 8a-5p M-F and Sat. 8-4

[www.lakeannatractor.com](http://www.lakeannatractor.com)

4541 Chopping Rd., Mineral





Everleigh flights feature their estate made wines.

are offered in traditional dry and flavored options.

The Evers are planning their 2023 special event calendar. One notable date will be the June Louisa County First Friday After 5.

"We plan to do additional music and special meal events such as our first oyster roast which was held February 11," Barbara noted.

The tasting room is newly constructed and features a modern design with ample open spaces. There are two upstairs indoor/outdoor spaces that look out over the vineyard that are available first come first serve, but can be rented individually or by the pair. There's even a baby grand piano in the tasting room and encourage talented folks to play.

This spring Everleigh will be open Friday 3-8, Saturday 12-8 and Sunday 12-7. Starting May 1 Everleigh will be open Thursday 3-8 as well.

So what do the Evers want a visitor to say after the visit?

"The wines, beer and cider were excellent, the staff was friendly and welcoming, the tasting room was unique and takes your breath away. I can't wait to come back."

Barbara noted, "This business is truly a family affair. All four of our children and daughter-in-law play important roles. We love being able to see each other and support each other."

**LKA**



Barbara and Joe Evers are usually on site to greet and chat with visitors to Everleigh Vineyard & Brewing Co.



Ryan Evers brews Everleigh's beer on site.

EVERLEIGH VINEYARDS  
&  
BREWING COMPANY

Taste the Extraordinary a  
Short Drive from Lake Anna

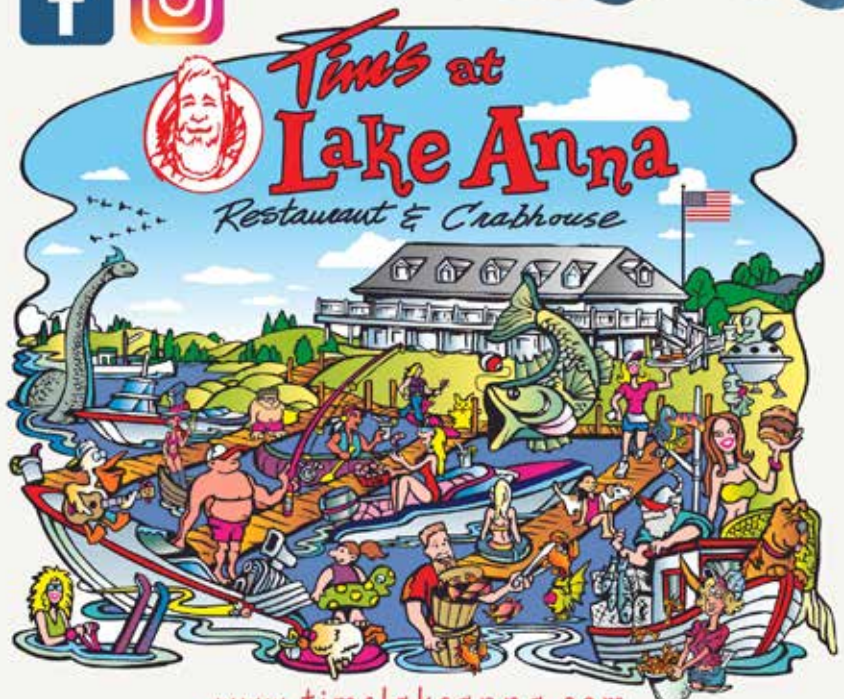


Fridays 3-8 PM | Saturdays 12-8 PM | Sundays 12-7 PM

9845 Jefferson Hwy, Mineral, VA  
everleighvineyards.com  
804-356-0059

Open YEAR ROUND

OUTDOOR WATERSIDE DINING  
INDOOR SEATING + FULL BAR  
BOAT + CAR ACCESS



www.timslakeanna.com  
200 Boardwalk Way, Mineral, VA 23117  
(540) 894-5010 (540) 894-5011



**QUALITY REMODELING** *Serving the lake area since 1968!*

Decks / Pergolas  
Kitchens / Bathrooms  
Basements  
Additions / Pre-sale Repairs

[www.qualityplumbingremodeling.com](http://www.qualityplumbingremodeling.com)

**(434) 589-1904**

## Wastewater Treatment Plant

*continued from page 5*

“(Commercial property on Route 208) is going to be developed. That area is either going to be developed on private septic systems that are going to depend on developers and commercial property owners or it’s going to be developed on a wastewater treatment facility that is operated by the municipal government that’s held to the highest standards for wastewater treatment of anybody around,” said Mineral District Supervisor Duane Adams, who represents the area. “(This acquisition) is facilitating responsible infrastructure for commercial development that we all know is going to come.”

To support that development, Louisa County is considering two upgrade options for the plant, Economic Development Director Andy Wade told the Planning Commission earlier this month.

For about \$75 million, the county could upgrade the facility from its current capacity to handle 20,000 gallons of wastewater per day to its permitted 99,000-gallon per day capacity. For about \$11 million, the plant could be expanded to discharge 300,000 gallons of wastewater daily. County Administrator Christian Goodwin submitted a \$7.5 million request for upgrades at the facility as part of the county’s preliminary Capital Improvement Plan for FY24.

While some community members have expressed support for the county acquiring and improving the facility—the Windwood Coves Property Owners Association submitted a letter to the board in 2021 in favor of the acquisition—the county’s proposal has turned controversial in recent months largely because of its connection to LA Resort, LLC’s plans to build a mixed-use development across the street that would connect to the infrastructure.

Despite loud opposition from neighbors, supervisors approved LAR’s request to rezone 15.2 on the south side of Route 208 for a Planned Unit Development in a separate action at the same meeting. As a proffered condition of the rezoning, LAR agreed to pay \$1 million toward the facility’s upgrade and \$250,000 in connection fees.

The county’s acquisition of the plant emerged as a point of contention during the rezoning with opponents arguing that buying the plant is a subsidy for wealthy developers and a risky deal for taxpayers. They questioned whether revenue from commercial development would materialize to pay for the plant and argued it’s unwise for the county to acquire an asset that’s out of compliance with state regulations.

Seven community members weighed in on the acquisition during the meeting’s public comment period with several reiterating those concerns.

But Greg Baker, president of the Lake Anna Civic Association, took a somewhat different view. He agreed that the plant has problems but said he’s open to the county stepping in to fix them.

“This privately-owned facility is wrought with issues...what’s there now is certainly broken,” Baker said. “I do hope if you vote to take over this facility you will make the necessary investments to bring this up to a standard that does not release excessive nutrients into the lake and is not something we are worried about failing.”

But Baker cautioned supervisors against expanding the plant beyond its permitted capacity. He said that LACA worked closely with DEQ to ensure that the facility wouldn’t add excess nutrients to the lake when the agency permitted it to discharge 99,000 gallons of wastewater daily. The organization opposes its expansion beyond the current limit, he said, citing concerns about the Harmful Algal Blooms that have plagued the lake north of the Route 208 bridge.

“We already have a Harmful Algae Bloom problem at Lake Anna. Harmful Algae Blooms are caused by excessive nutrients like phosphorous and nitrogen. Well, guess what comes out of wastewater treatment facilities? Nitrogen and phosphorus. So, we are very concerned about the concept of any future expansion beyond what DEQ has already approved at 99,000 gallons,” he said.

Before motioning to buy the facility, Jackson District Supervisor Toni Williams, one of the board’s most fiscally conservative members, said that most of the opposition to the facility’s acquisition relates to the rezoning not the plant itself. He said that the county’s investment would fix the issues that neighbors are complaining about, noting the current owner’s financial struggles and inability to abide by state rules. Williams also insisted that the county isn’t sure how much they’ll spend on the plant beyond fixing its current issues.

“This is a solution to a problem and, if there was not a resort tied to this, there would be no discussion. You’d be cheering not going boo,” he said. “We are fixing an existing problem that is putting pollutants into the lake.”

After agreeing to buy the plant and approving LA Resort’s rezoning, supervisors green-lighted a revised Memorandum of Understanding with LAR that obligates the developer to pay \$1 million towards the plant’s upgrade. In the MOU, the county agrees to upgrade the facility to at least its permitted capacity. **LKA**

**AtoZ**  
Carpet & Upholstery Inc.  
**PROFESSIONAL CARPET AND FABRIC CARE**

540-895-0414 OR 540-720-3528  
[www.AtoZCarpet.net](http://www.AtoZCarpet.net)

Carpet Cleaning You Can Trust.  
WE GREEN CLEAN! CLEANTRUST CERTIFIED FIRM

20  
Established 1996

One Call And We Can Do It All...

**PLANTS, STONE & MULCH  
GIFTS & FLORIST  
LANDSCAPING  
HARDSCAPING  
LAWN CARE**

**Lake Anna NURSERY AND LANDSCAPING**

71 Oak Grove Dr., Mineral, Virginia, VA 23117  
(540) 894-9488 [www.lakeannanursery.net](http://www.lakeannanursery.net)

The key to unlocking all your real estate needs.

Real Estate Sales  
Waterfront  
Water Access Homes  
Vacation Rentals  
Property Management

**Lake Anna REAL ESTATE GROUP**

(540) 895-2100 [www.LakeAnnaLiving.com](http://www.LakeAnnaLiving.com)  
5700 Fenton Road, Spotsylvania, Virginia 22551

Join us for our famous El Gran Margarita and other specialty drinks from the bar.

Celebrate your birthday or family occasion with us!

Open 7 Days A Week For Lunch & Dinner

**540 205-3005**

Dine-In or Take Out

Located at Pleasants Landing, 349 Pleasant Landing Rd., Bumpass

**Let The Pros Show You The Lake!**

**LONG & FOSTER**  
REAL ESTATE  
13001 Lake Anna Village Dr.

**LONG & FOSTER**  
REAL ESTATE

**CHRISTIE'S**  
INTERNATIONAL REAL ESTATE

**540.895.9000**

[www.facebook.com/LongandFosterLakeandCountry](http://www.facebook.com/LongandFosterLakeandCountry)  
[www.longandfoster.com/LakeAnna](http://www.longandfoster.com/LakeAnna)

Located On Rt. 208  
13001 Lake Anna Village Dr  
Spotsylvania, VA 22551

# eat&drink

LAKE ANNA  
DINING  
NEWS

Want to advertise in Lake Anna Life & Times Eat&Drink? Email [info@lakeannalife.com](mailto:info@lakeannalife.com) for information. Amy Hager, Page Editor will be in touch.

## Lake Anna Restaurants And Businesses Raise \$7,500 For Scholarships

The Lake Anna Business Partnership's annual Lake Anna Restaurant Week was held February 5-12 and included the following participating establishments: Callie Opie's Orchard, Coyote Hole Ciderworks, El Gran Patron, Lake Anna Taphouse, Mad Batter Bakery, Tavern on the Rail, Tasty Crab, Tim's at Lake Anna and Vito's On The Lake.

The goal of the week was to encourage locals and visitors to patronize area restaurants during a typically slow time of the year and generate funds for the new LABP Scholarship.

"We want to help our member restaurants get through the winter and I thank each of them for participating this year. We had the largest, most diverse field of restaurants in the history of the promotion and that was good for our scholarship fund," LABP president Jody Korman told Life & Times.

Each year LABP organizes and promotes the Lake Anna Restaurant Week to raise money for charity. This year's event will focus donations on the LABP Scholarship Fund – a \$2,500 scholarship that will go to a worthy high school student at-



Lake Anna Restaurant Week saw seven area restaurants team up to raise money for an LABP scholarship fund.

tending Louisa, Spotsylvania and Orange County high schools planning on attending college or a technical training school.

Participating restaurants declared certain menu items part of the Lake Anna Restaurant Week menu and donated \$1 from the sale of each of these meals to the LABP Scholarship Fund. LABP, in turn will match up to \$500 of the donations.

One LABP Scholarship Fund was fully funded by Rappahannock Electric Cooperative. A second \$2,500 was the focus of Restaurant Week. The following businesses pledged \$1,000: Steve Harler of Mid Atlantic Watersports and Dock Builders, Lionel Carter/Lake Dream Realty and Dr. Dan Slovis of Lake Anna Veterinary Hospital. Mike Kavros of Callie Opie's Orchard donated \$400. Lake Anna Life Media Group, realtor Libby Sandbridge, Jody Korman of Commonwealth Referrals, Lake Dream Realty and Ethan Seltzer of Ground Force pledged \$250. Bob Kulakowski of Pro Radon Testing pledged \$100.

Three, separate scholarships were generously funded and will be awarded this spring. To make a donation or for an application for the scholarship, contact LABP at [info@visitlakeanna.org](mailto:info@visitlakeanna.org). Applications are due back by April 15. **LKA**

Brews - Wines - Ciders  
**(540) 634-7500**  
**LAKE ANNA TOURS**  
Custom tours up to 14 passengers

**MOOTHRU**  
real ice cream from real dairy farmers  
Hand scooped ice cream, sundaes, milkshakes.  
200 Boardwalk Way  
Mineral, Virginia  
[www.moothru.com](http://www.moothru.com)

Hours: 11am-last call Year-round  
Check our Facebook page for Live Music!  
**The Cove**  
Est. 2016  
Join Us This Season!  
**AT LAKE ANNA**  
Amazing Sunsets!  
RESTAURANT & BAR

Fresh, American Cuisine, Seafood | Indoor & Outdoor Bars  
Boat-In Or Drive-Up Waterfront Dining On The Lake; Pamunkey Branch  
6320 Belmont Rd., Miral, VA 23117 • 540.854.7000 • [www.thecovelka.com](http://www.thecovelka.com)

Menu at [tavernontherail.weebly.com](http://tavernontherail.weebly.com)  
Join Us For Fine Food, Atmosphere & More.  
**Tavern On The Rail**  
Winner of LABP's 2015 Best Fine Dining Restaurant Award!  
Brunch 11-2:30  
Dinner 5-9  
Th-Fr-Sat Reservations Recommended  
81 Tavern Rd, Mineral, VA  
**540.872.RAIL**

**Below Deck**  
PIZZA & SANDWICHES  
Located on the water under Tims's at The Boardwalk On Lake Anna  
**(540) 894-7806**  
Call ahead and we'll have your order waiting!

**Tasty Crab Seafood & Noodle Restaurant**  
Seafood Buckets, Ramen, Fried Baskets, Yakisoba  
540.894.0007 or 540.894.0008  
200 Lake Front Drive, #101, Mineral, VA

**Asian Cafe**  
Restaurant & Sushi Bar  
HIBACHI GRILLED STEAK, SHRIMP & CHICKEN  
540.894.9899  
Lake Anna Island Plaza, Louisa side of the Rt. 208 Bridge - boat in or drive up!

On the water, Pamunkey Branch!  
**Hunters Landing AT THE COVE**  
MARINA & CONVENIENCE STORE  
PIZZA - DELI - BEER - WINE  
BAIT - LAUNCH RAMP  
ETHANOL FREE FUEL ON & OFF THE WATER - BOAT SLIPS  
9 Flavors of Soft Serve!  
**540.854.7007**  
6320 Belmont Rd., Mineral, VA 23117

Want to advertise in Lake Anna Life & Times Eat&Drink? Email [info@lakeannalife.com](mailto:info@lakeannalife.com) for information. Amy Hager, Page Editor will be in touch.

## Lake Anna Taphouse Grounds To Feature Artificial Turf And New Beach

The days of slogging through the sodden grass at Lake Anna Taphouse are over with the recent installation of turf on the entire lakeside grounds.

"We've resodded that area three times now. The amount of traffic it gets does not allow grass to grow. We wanted to make the area more useable throughout the seasons so we decided to turf it," Lake Anna Taphouse owner Brian Gilbreth told Lake Anna Life & Times.

He noted the nice thing with turf is when it rains, the water drains through the turf. In the past, in any weather event that came through it would create a muddy mess and he'd have to cancel musical performances.

GTR, a local company did the



Artificial turf waiting to be installed at Lake Anna Taphouse.

job using a synthetic grass materials designed to keep the entire area well drained and cool in the summer.

"Ben and Simon and their team did a great job. Approximately

8,500 sq. ft. of turf was installed. They created a beach area near the floating docks, three putting greens and a giant chess board," Gilbreth said.

Other upgrades for the popular

lakeside venue at the 208 bridge include redoing the seating on the deck and on the turf to double the seating capacity, more bars outside and mixed drinks.

"We'll have a summer season of specially made cocktails and we have been brewing a bunch of new beers for the spring and summer season including a summer mango IPA, a traditional Kolsches,"

Gilbreth said the 2023 live music

schedule will feature many new names.

"We've made a big effort this year to bring in new talent for outside the area - MD DC, WV and NY"

Gilbreth is also going to mix in some new events like a comedy show, an annual Lake Anna 70's themed birthday party and a pirate themed weeklong celebration. The annual spring Lakefest Festival will be held again in May. **LKA**

## Mad Batter Creates Landmark Cupcake Series

If you've visited Mad Batter Bakery in Mineral you've probably seen, or maybe even eaten, their famous cupcake the "Hippie Dancing Queen." What some customers may not know is how that cupcake got its name.

If you attend live music events around Lake Anna you have probably spotted our famous friend, Terri, also known as the Hippie Dancing Queen, out on the dance floor. She is usually wearing



The Hippie Dancing Queen cupcake from Mad Batter.

tie dye and having a blast! This marble cupcake topped

with tie dye icing is named after her. The Mad Batter is excited to announce a whole new series of cupcakes coming out this spring called "Famous Friends." They will be using Facebook to ask their customers to nominate friends from the community to have a cupcake named after them.

The local bakery just minutes from the lake will also be doing a Lake Anna Life Series of cupcakes. **LKA**

## Elk Creek Store's Perfectly Southern Fried Chicken

Lake Anna's convenience or country store network serve an important role in the community. There are no fast food restaurants, so these establishments fill that gap for breakfast and lunch, sometimes even for dinner. The parking lots swell with patrons as they head to work and take a lunch break.

Elk Creek Country Store serves the Louisa side of the lake and is a popular spot with locals and visitors.

Owner Mike Rassawalla has recently arranged to offer Perfectly Southern Fried Chicken and invites visitors and locals to try this new addition to the long-time store on Kentucky Spring Road.

According to him, "Perfectly Southern Fresh Fried Chicken is



the result of developing unique proprietary Southern breeding flavors that deliver the best fried chicken experience possible."

A store spokesperson told Lake Anna Life & Times they will continue to offer the popular two-piece and two-side meal (\$8.99) featuring favorite sides like mac and cheese, smashed potatoes, collard greens, corn, green beans (a different vegetable each day).

New to the Elk Creek hot food bar is a spicy chicken sandwich and on Fridays - a fried Swai fish sandwich with two sides (\$8.99).

Other popular menu items include Elk Creek's hearty, made-to-order breakfast sandwiches (served 5a-10a). Lunch begins after 10 am. **LKA**

Farm-brewed beer and hand-crafted wines await you at...

**Southern Revere** CELLARS

"Highly recommended. The drinks are delicious and the owners/staff are on hand to give great suggestions. It's a relaxed, family atmosphere."

20-minutes from mid-lake  
1100 E. Jack Jouett Rd., Louisa, VA  
540.260.5494 southernrevere.com

**MAD BATTER** Bakery

freshly made cakes, cupcakes and custom cakes for weddings, anniversaries and other special occasions

Facebook - Mad Im\_mad\_batter\_bakery

540.259.3344  
Minutes from mid lake at  
121 Mineral Ave., Suite B, Mineral, Virginia

Breakfast / Lunch / Dinner

**ELK CREEK COUNTRY STORE** EST. 1976

ATM - Beer - Wine - Coffee  
Minnows - Uncle Mike's Tackle Shop

**LKA** Wear **DOMINIC'S** **EXXON** **KRISPY KRUNCHY CHICKEN**

**Elkcreekcountrystore.com 540.872.3275**  
5224 Kentucky Springs Rd, Bumpass, VA 23024

A Short Drive For A Great Meal!

**SABOR A MEXICO** RESTAURANT  
Open 11a-9p  
540-894-5500

131 Mineral Ave., Mineral, VA. Just a few minutes from the lake!

# lake life

Our Lake Life calendar is open to advertisers and non-profit organizations. Submit your event at [llife@earthlink.net](mailto:llife@earthlink.net)

## CALENDAR OF EVENTS

Every Wednesday  
Bingo at Coyote Hole Ciderworks – 6pm.  
Visit [www.coyotehole.com](http://www.coyotehole.com).

All Day Happier Hour at Tim's Lake Anna  
- \$5 Killa Drillas & Bikini Fuzz. Visit [www.timslakeanna.com](http://www.timslakeanna.com)

Wednesday Wings at Lake Anna Taphouse.  
Visit [www.lakeannataphouse.com](http://www.lakeannataphouse.com)

Every Thursday -  
\$5 off Select Shrimp Menu Items at Tim's  
Lake Anna. Visit [www.timslakeanna.com](http://www.timslakeanna.com)

Thirsty Thursday \$5 off Growler Fills at  
Lake Anna Taphouse. Visit  
[www.lakeannataphouse.com](http://www.lakeannataphouse.com)

Trivia Night at Coyote Hole Ciderworks –  
6pm. Visit [www.coyotehole.com](http://www.coyotehole.com).

Trivia Night at Lake Anna Taphouse – 6pm.  
Visit [www.lakeannataphouse.com](http://www.lakeannataphouse.com).

Every Friday  
Fish Fry Fridays through March 31 – Tim's  
at Lake Anna. Visit [www.timslakeanna.com](http://www.timslakeanna.com).

Every Sunday  
\$3 Mimosas at Lake Anna Taphouse.  
Noon until the champagne runs out! Visit  
[www.lakeannataphouse.com](http://www.lakeannataphouse.com)

March 3 – Chris Hanks at Callie Opie's  
Orchard – 7pm – Visit [www.callieopiesorchard.com](http://www.callieopiesorchard.com).

March 3 – Lake Anna Comedy Night at  
Coyote Hole – 8:30pm. Visit [www.coyotehole.com](http://www.coyotehole.com).

March 4 – Billy & The Backbeats Band at  
Callie Opie's Orchard – 7pm. Visit [www.callieopiesorchard.com](http://www.callieopiesorchard.com).

March 10 – Paint & Sip with Brushstrokes  
& Everything Art by Tanya at Coyote Hole –  
6pm. Visit [www.coyotehole.com](http://www.coyotehole.com).

March 10 – Unsuitables Band at Callie  
Opie's Orchard – 7pm. Visit [www.callieopiesorchard.com](http://www.callieopiesorchard.com).

March 11 – Second Saturday Soup & Song  
– Lake Anna Winery – 1pm. Visit [www.lawinery.com](http://www.lawinery.com) or call 540/895-5085.

March 17 – Cherry Red Band at Callie  
Opie's Orchard – 7pm. Visit [www.callieopiesorchard.com](http://www.callieopiesorchard.com).

[piesorchard.com](http://piesorchard.com).  
March 17 – St. Patrick's Day Celebration  
– Tim's Lake Anna – 11am-9:30pm. Visit  
[www.timslakeanna.com](http://www.timslakeanna.com).

March 17 – Steven Snider at Lake Anna  
Taphouse – 6pm. Visit [www.lakeannataphouse.com](http://www.lakeannataphouse.com).

March 18 – Centerline Band at Callie  
Opie's Orchard – 7pm. Visit [www.callieopiesorchard.com](http://www.callieopiesorchard.com).

March 18 – Charcuterie Workshop at Lake  
Anna Winery – 10:30am-12 noon. Visit  
[www.lawinery.com](http://www.lawinery.com) or call 540/895-5085.

March 18 – Wayne Snow at Lake Anna  
Taphouse – 1pm. Visit [www.lakeannataphouse.com](http://www.lakeannataphouse.com).

March 18 – Curt & Rob Acoustic Duo at  
Lake Anna Taphouse – 6pm. Visit [www.lakeannataphouse.com](http://www.lakeannataphouse.com).

March 19 – Rick Hollowell at Lake Anna  
Taphouse – 1pm. Visit [www.lakeannataphouse.com](http://www.lakeannataphouse.com).

March 24 – Cactus Jack Band at Callie  
Opie's Orchard – 7pm. Visit [www.callieopiesorchard.com](http://www.callieopiesorchard.com).

[piesorchard.com](http://piesorchard.com).  
March 24 – Dave Guy at Lake Anna  
Taphouse – 6pm. Visit [www.lakeannataphouse.com](http://www.lakeannataphouse.com).

March 25 – Bill Anderson at Lake Anna  
Taphouse – 1pm. Visit [www.lakeannataphouse.com](http://www.lakeannataphouse.com).

March 25 – McHale & Justina at Lake Anna  
Taphouse – 6pm. Visit [www.lakeannataphouse.com](http://www.lakeannataphouse.com).

March 25 – Reunion Band at Callie Opie's  
Orchard – 7pm. Visit [www.callieopiesorchard.com](http://www.callieopiesorchard.com).

March 26 – Fork in the Road at Lake Anna  
Taphouse – 1pm. Visit [www.lakeannataphouse.com](http://www.lakeannataphouse.com).

March 31 – Cheap Whiskey Band at Callie  
Opie's Orchard – 7pm. Visit [www.callieopiesorchard.com](http://www.callieopiesorchard.com).

March 31 – Mercy Creek at Lake Anna  
Taphouse – 6pm. Visit [www.lakeannataphouse.com](http://www.lakeannataphouse.com).

April 1 – Cake Fight at Lake Anna Taphouse  
– 3pm. Visit [www.lakeannataphouse.com](http://www.lakeannataphouse.com).

April 1 – Chris Hanks Music at Callie Opie's  
Orchard – 7pm. Visit [www.callieopiesorchard.com](http://www.callieopiesorchard.com).

April 1 – Mo & Mary Live at Coyote Hole –  
4pm. Visit [www.coyotehole.com](http://www.coyotehole.com).

April 8 – Chris Hanks at Lake Anna Taphouse  
– 6pm. Visit [www.lakeannataphouse.com](http://www.lakeannataphouse.com).

April 8 – Enya Agerholm Music at Coyote  
Hole – 3pm. Visit [www.coyotehole.com](http://www.coyotehole.com).

April 15 – Billy & The Backbeats at Coyote  
Hole – 4pm. Visit [www.coyotehole.com](http://www.coyotehole.com).

April 15 – Josh Millholland at Lake Anna  
Taphouse – 1pm. Visit [www.lakeannataphouse.com](http://www.lakeannataphouse.com).

April 21 – Made in the USA Band at Lake  
Anna Taphouse – 6pm. Visit [www.lakeannataphouse.com](http://www.lakeannataphouse.com).

April 28 – Big Gavel Band at Lake Anna  
Taphouse – 6pm. Visit [www.lakeannataphouse.com](http://www.lakeannataphouse.com).

© 2023. Lake Anna Life Calendar cannot be  
reproduced without permission.

Find  
LOUISA  
EVENTS

VISITLOUISA.COM



VISITLOUISA.COM



Professional painter lining up jobs between now and fall. If you want a quote, we'll come visit your site.



**Call 434-294-9423 ask for Alex Owens**



**MONTICELLO PAINTING**

28 Years Experience  
Honest & Reliable  
Licensed & Insured  
**540-254-0652 or 434-321-1630**  
[monticellopainting.com](http://monticellopainting.com)

Minutes From The Lake...



**Mineral Mercantile**  
*Vintage & More!*

HANDMADE ITEMS/FURNITURE, WREATHS, REFINISHED ITEMS, ANTIQUES & MAPLERANDA CANDLES & LAKE-THEMED GIFTS  
**(540) 259-3644**  
312 Mineral Ave. Mineral, VA 23117



**This Season, give us a call to bid on your lawn maintenance!** (540) 419-3009

Tree Pruning • Aeration • Mulching • Mowing  
[DeuceDanielsLawn@outlook.com](mailto:DeuceDanielsLawn@outlook.com)

*old items and new items*  
**Yesterday and Today**  
*and old items made new*

Antiques, Vintage, Upcycled & New Items  
**We love mixing old & new!**

 yesterdayandtodaystore  
**540-227-4075**  
401 Mineral Ave., Mineral

Lake Anna  
**Pet Grooming**  
*in Patricia Dee*

Skilful Handling of Older Pets & Puppies  
Expert Hand-dressing  
All Breed Styling  
Med Baths & Hand "Fluff" Drying  
Over 34 Yrs. Experience

Bring Pet by Boat Cat Grooming  
Bring Pet by Car

Appx. Only Sunday thru Wednesday  
[patriciadee.com](http://patriciadee.com)  
**240.988.8229**  
[PatriciaDeePetGrooming.com](http://PatriciaDeePetGrooming.com)  
[LakeAnnaPetGrooming.com](http://LakeAnnaPetGrooming.com)

**Xtensive**  
**BODY AND PAINT**

**Fender Benders To Restoration**

Auto Restoration/Repairs  
Paint Work/Body Work  
Powder Coating • Tire Repairs  
Sand & Soda Blasting

 **540 841-9684**

1875 New Bridge Rd., Mineral, VA  
Across from Lake Anna Food Lion  
[Facebook.com/Xtensive-Body-And-Paint](https://www.facebook.com/Xtensive-Body-And-Paint)

**Thinking of Buying or Selling? Call Me!**





**Kristie Cooke**  
Realtor/Property Manager  
540-287-5290 [myLKArealtor@gmail.com](mailto:myLKArealtor@gmail.com)  
Lake Anna Realty  
[www.lakeannalandandhomes.com](http://www.lakeannalandandhomes.com)



**LKA™ WATERSPORTS**  
Fun for rent on beautiful Lake Anna!  
Take a break, enjoy the lake!




**JET SKI & BOAT RENTALS**

<p><b>22' Bentley</b></p> <p>Enjoy beautiful Lake Anna on a 22' Bentley 200 Cruise 90 HP. With a spacious deck, this 2000 pontoon has room for you, your family and friends to have fun on the water.</p>  <p>2020 22' Bentley 220 Cruise 90 HP \$425/Day or \$275/Half Day</p>	<p><b>20' Bentley</b></p> <p>Have a group that wants to enjoy being on the water on beautiful Lake Anna? Our 20' Bentley 200 Cruise 90 HP pontoon has plenty of room for having a great time on the water.</p>  <p>2020 20' Bentley 200 Cruise 90 HP \$400/Day or \$250/Half Day</p>	<p><b>20' Bennington</b></p> <p>Designed to offer a great time on the water for a large group, renting our 20' Bennington pontoon could be just what you need to enjoy beautiful Lake Anna. Check it out today!</p>  <p>20' Bennington 90 HP \$400/Day or \$250/Half Day</p>	<p><b>Rent a Jet Ski</b></p> <p>Have a blast on one of our 2020 Sea Doo 130X iBRX with the 3, you can share the fun and exhilaration of zipping across Lake Anna and enjoying the water to the fullest!</p>  <p>2020 Sea Doo 130 \$115/Hour or \$375/Half Day or \$650/Day - 2 HOUR MINIMUM</p>
--	---	---	--

**LKA WATERSPORTS**  
**540.894.1518**  
[lkawatersports.com](http://lkawatersports.com)  
200 Boardwalk Way • Mineral, VA 23117  
Located Behind Tim's on Lake Anna

**We Are Lake Anna's Wakesport Headquarters!**

**Visit our pro shops!**






**Boat Rentals!** **Equipment Rentals!**

BOAT SALES & SERVICE & PARTS // PRO SHOP // RENTALS // APPAREL

**(540) 893-6111**

Two locations: 200 Boardwalk Way Suite C, Mineral (under Tim's)  
349 Pleasants Landing Rd., Bumpass (at the dam)

[www.MidAtlanticWatersports.com](http://www.MidAtlanticWatersports.com)








**Patios - Decks - Roofing  
Landscaping  
General House  
Repairs**

**TJ Mardeusz**  
Licensed & Insured



**540/222-9735**  
tjmardeusz08@yahoo.com



- ✓ Dependable, weekly doorstep trash pick-up at Lake Anna
- ✓ As needed pick-up for your vacation rental property
- ✓ Home, garage, storage unit clean-outs, yard waste hauling, removal of playsets and sheds

Call Scott today for a free, no obligation estimate at 540.878.8420

# lake anna reflections

## Inspiration Comes From Many Places

As the publisher of a local paper, I am constantly looking for photo opportunities and story leads that help us generate interesting, entertaining and inspiring stories.

We cover the news with factual reporting. We feature intriguing personalities. We highlight events our marketing partners and friends plan. There's a lot out there to cover if you are paying attention, for sure.

So, when we heard about a 21-year-old that wanted to do reviews of Lake Anna area restaurants I was intrigued. To be honest, restaurant reviewing isn't easy. You have to take the time to eat there and then be able to describe the experience down to fairly minute details. You get criticized by people that don't agree with your opinions. There are no free meals either, as that is a big no-no if you are reviewing any place. But we thought it was a neat idea and started to Follow the reviews.

Ryan Carter is that 21-year-old. He's the son of Lionel (Lonnie) and Shelly Carter, owners of Lake Dream Realty and long-time LKAers.

Ryan is autistic but he loves to review things, including amusement parts and restaurants. His dad takes him to the eatery and purchases the meals. His mom helps edit his reviews. The end result is time spent together fellowshiping over a meal and then an informative, unassuming review for others to consider.

Ryan's story of seeing a need in the community and wanting to fill that need is not unfamiliar here. As Lake Anna continues to grow, from Peach Grove Road to Old Quarry Lane and everywhere in between, there will be other needs to fill and hopefully other folks to fill them.

The upcoming Lake Anna Business Partnership Job Fair is way to give young people like Ryan (and really any age) the opportunity to be something here, too. On March 16, businesses and potential employees will gather at Callie Opie's Orchard and see if we can solve the lingering staffing issue that has hindered many of our businesses here.

The LABP's scholarship fund is another example of our community coming together to help the entrepreneurs of tomorrow succeed. Funds donated by local businesses (Lake Anna Life is one) and restaurants that participated in Lake Anna Restaurant Week will be combined to offer a \$2,500 scholarship to a deserving Louisa, Spotsylvania or Orange County high school senior heading off to college or a technical institute in the fall.

The point of highlighting these examples is that in our community a few people can really make a difference.

Think of Ryan Carter and his idea that has reached over 50,000 people via Lake Anna Life's Facebook page inspiring them to visit. Think of the LABP Directors that agreed to hold the Lake Anna Job Fair and the business that agreed to host it so area businesses can operate without fear of short staff closures. Think, too of the restaurant owners that unselfishly agreed to participate in Lake Anna Restaurant Week and donate \$1 per meal to the scholarship fund to help a young person take the next step to being an LKA leader.

Let's not forget what Jody Korman is doing to address the terrible litter problem that exists around the lake and Louisa County. Not only is she organizing clean-up efforts, but she's also actually participating in them personally and inspiring many other community members.

I want you to think of all this positive momentum in our community the next time you want to cast a stone.

Yes, there is community debate over the recent approval of a resort planned to be built alongside Route 208 and Mitchell Creek. Truth be told, it looks like more development projects are on the near horizon, sure to create more differences of opinion amongst our residents. Yes, opinions on short term rentals here can easily divide a dinner table. Yes, two consecutive years of higher property assessments/taxes tends to be wearisome. The debate on no wake surfing buoys, can be too.

Rest assured, though, we can all agree that folks like Ryan, Korman, area restaurant owners, our Lake Anna Life Media Group team, LABP Directors and many others are doing their part to make Lake Anna an amazing and highly desirable

Lake Anna Life Publisher



Lonnie and Ryan Carter at El Gran Patron.

*Editor's Note: Have a Lake Anna issue you'd like to express your views on? Submit your piece to us and make your voice be heard! The opinions expressed in this column are meant to elicit a response from our readers. If you'd like to submit an essay for publication please email it to us at info@lakeannalife.com*



Restaurant on site, five minutes to Sturgeon Creek Marina, 1.6 miles from Anna Point & High Point Marinas and 6 miles from Lake Anna State Park.

**(540) 895-5302**  
5152 Courthouse Rd,  
Spotsylvania, VA 22551

**Boaters welcomed!**  
YOUR FAVORITE GETAWAY [www.Hotellakeanna.com](http://www.Hotellakeanna.com)



**Boat Houses • Sun Decks • Boat Lifts • Roll Up Windows • Sea Walls**

We'd Like To Bid On Your Ideas!  
**LAKE ANNA**  
MARINE CONSTRUCTION  
Ask about our package boat house plans!  
**(540) 894-1037** [lkannadocks.com](http://lkannadocks.com)

71 Oak Grove Drive, Mineral, Virginia 23117

# lake anna Glitterati



Photos - 1/ Lake Anna Life Media Publisher C.C. McCotter with Cutalong's Chris Baird. 2/Colin from Boato boat rentals at the Feb. LABP BAH.. 3/ Supervisor Duane Adams and his wife, Susan. 4/Tammy Boxley of Out of the Box Catering and Lindsey McClellan of Sunset Properties at Lake Anna. 5/ Jon and Stephanie Koren, Ashley and Grayson Hoffman, Troy and Sheila and Troy Dillard at the January LABP Business After Hours held at Tim's. 6/Melody Bowers of Tavern on the Rail. 7/Ryan Carter of Ryan's Reviews and Mike Kavros of Callie Opie's Orchard. 8/Sarah Marshall of Dominion Energy and C.C. McCotter at the LABP Christmas Business After Hours. 9/Amy Riggelman and Gus from Tim's.

**RENTAL BOATS  
DELIVERED TO  
YOUR VACATION  
HOME**

rentboato.com | 540-894-1837

**O. Cooper PAVING**  
Asphalt Professional  
SEAL COATING & PATCHING

Billy Cooper  
LICENSED & INSURED

3036 WARRENTON ROAD  
FREDERICKSBURG, VA 22406  
paving18@icloud.com

540.752.1000

Free Estimates  
www.oocooperpaving.com

OPEN WED-SUN FOR TASTINGS

**LAKE ANNA WINERY**

Drop by for a tasting or our weekly Soup & Song events!

Weddings • Special Events • Tours  
Open Year Round  
Wed. - Sun.

540.895.5085  
lawinery.com

5621 Courthouse Road, Spotsylvania, VA 22551



# Dockside Realty



## Your Lake Anna Expert Agents



Thinking about selling your home? Use local agents with proven expertise in selling Lake Anna and surrounding areas. Put Dockside's expert agents to work for you.



### Dockside Realty

### (540) 895-9400

### [DocksideRealty.com](http://DocksideRealty.com)



